

WEIGHTS AND GROUND PRESSURE

Equipped with 6.40 m (21'0") boom, 3.20 m (10'6") arm and 1.40 m³ (1.83 yd³: SAE, PCSA heaped) bucket.

Shoe type	Shoe width	Operating weight	Ground pressure
Triple grouser	600 mm (24")	31 000 kg (68 300 lb)	63 kPa (0.64 kgf/cm ² , 9.10 psi)
		31 600 kg (69 700 lb)	59 kPa (0.60 kgf/cm ² , 8.53 psi)
	700 mm (28")	31 500 kg (69 400 lb)	55 kPa (0.56 kgf/cm ² , 7.96 psi)
		32 200 kg (71 000 lb)	52 kPa (0.53 kgf/cm ² , 7.54 psi)
	800 mm (31")	31 900 kg (70 300 lb)	48 kPa (0.49 kgf/cm ² , 6.96 psi)
		32 600 kg (71 900 lb)	46 kPa (0.47 kgf/cm ² , 6.68 psi)
Flat	600 mm (24")	31 800 kg (70 100 lb)	64 kPa (0.65 kgf/cm ² , 9.24 psi)
		32 500 kg (71 600 lb)	61 kPa (0.62 kgf/cm ² , 8.82 psi)

Figures in [] are data on the ZAXIS330LC.

Weights of the basic machines [including 6 800 kg (15 000 lb), 7 550 kg (16 600 lb) H-type and MTH-type, 8 200 kg (18 100 lb) K-type counterweight and triple grouser shoes, excluding front-end attachment, fuel, Hyd, oil, Eng. Oil and coolant etc.] are:

- ZAXIS330 23 600 kg (52 000 lb) with 600 mm (24") shoes
- ZAXIS330LC 24 200 kg (53 400 lb) with 600 mm (24") shoes
- ZAXIS350H 24 900 kg (54 900 lb) with 600 mm (24") Reinforced shoes
- ZAXIS350LCH 25 400 kg (56 000 lb) with 600 mm (24") Reinforced shoes
- ZAXIS350K 25 700 kg (56 700 lb) with 600 mm (24") Reinforced shoes
- ZAXIS350LCK 26 300 kg (58 000 lb) with 600 mm (24") Reinforced shoes
- ZAXIS370MTH 28 200 kg (62 200 lb) with 600 mm (24") Reinforced shoes

ZAXIS350H / ZAXIS350LCH (Heavy-duty version), ZAXIS370MTH (Mighty track with Heavy-duty version):

Equipped with 6.40 m (21'0") H-boom, 3.20 m (10'6") H-arm, and 1.40 m³ (1.83 yd³: SAE, PCSA heaped) Rock bucket.

	Shoe width	Operating weight	Ground pressure
ZAXIS350H	Reinforced Triple grouser 600 mm (24")	32 900 kg (72 500 lb)	67 kPa (0.68 kgf/cm ² , 9.67 psi)
ZAXIS350LCH		33 400 kg (73 600 lb)	63 kPa (0.64 kgf/cm ² , 9.10 psi)
ZAXIS370MTH		36 300 kg (80 000 lb)	68 kPa (0.69 kgf/cm ² , 9.81 psi)

ZAXIS350K / ZAXIS350LCK (Demolition version):

Equipped with 6.40 m (21'0") K-boom, 3.20 m (10'6") K-arm, and 1.40 m³ (1.83 yd³: SAE, PCSA heaped) Reinforced bucket.

	Shoe width	Operating weight	Ground pressure
ZAXIS350K	Reinforced Triple grouser 600 mm (24")	33 500 kg (73 900 lb)	68 kPa (0.69 kgf/cm ² , 9.81 psi)
ZAXIS350LCK		34 100 kg (75 200 lb)	64 kPa (0.65 kgf/cm ² , 9.24 psi)

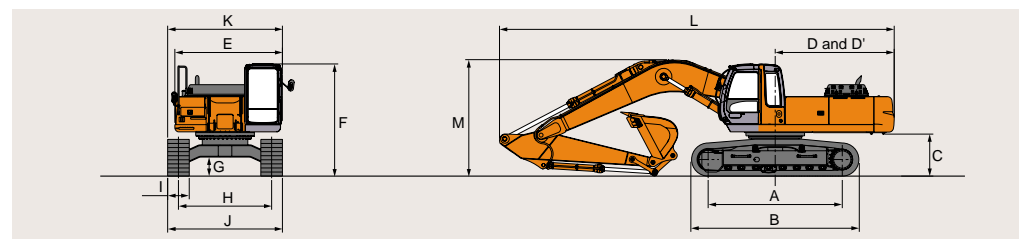
SERVICE REFILL CAPACITIES

	liters	US gal	Imp gal
Fuel tank	560.0	148.0	123.2
Engine coolant	35.0	9.2	7.7
Engine oil	36.0	9.5	7.9
Swing mechanism	16.3	4.3	3.6
Travel final device [STD, H]	9.2	2.4	2.0
(each side)	[MTH] 11.5	3.0	2.5
Hydraulic system	320.0	84.5	70.4
Hydraulic tank	154.0	40.7	33.9

BACKHOE ATTACHMENTS

Boom and arms are of welded, box-section design. 6.40 m (21'0") boom, and 2.66 m (8'9"), 3.20 m (10'6") and 4.00 m (13'2") arms are available. Bucket is of welded steel structure. Side clearance adjust mechanism provided on the bucket joint bracket.

DIMENSIONS



	ZAXIS330	ZAXIS330LC	ZAXIS350H	ZAXIS350LCH	ZAXIS350K	ZAXIS350LCK	ZAXIS370MTH
A Distance between tumbles	3 730 (12'3")		4 050 (13'3")		4 050 (13'3")		4 050 (13'3")
B Undercarriage length	4 640 (15'3")	4 940 (16'3")	4 650 (15'3")		4 950 (16'3")		5 060 (16'7")
*C Counterweight clearance	1 140 (3'9")		1 160 (3'10")		1 250 (4'1")		1 250 (4'1")
D Rear-end swing radius	3 320 (10'11")		3 310 (10'10")		3 380 (11'1")		3 380 (11'1")
D' Rear-end length	3 120 (10'3")		3 140 (10'4")		3 250 (10'8")		3 270 (10'9")
E Overall width of upperstructure	2 995 (9'10")		3 120 (10'3")		3 250 (10'8")		3 380 (11'1")
F Overall height of cab	500 (1'8")		500 (1'8")		560 (1'10")		560 (1'10")
*G Min. ground clearance	2 590 (8'6")		2 590 (8'6")		2 590 (8'6")		2 590 (8'6")
H Track gauge	G 600 (24")		G 600 (24")		G 600 (24")		G 600 (24")
I Track shoe width	3 190 (10'6")		3 190 (10'6")		3 190 (10'6")		3 190 (10'6")
J Undercarriage width	3 190 (10'6")		3 190 (10'6")		3 190 (10'6")		3 190 (10'6")
K Overall width	3 190 (10'6")		3 190 (10'6")		3 190 (10'6")		3 190 (10'6")
L Overall length	11 090 (36'5")		10 970 (36'0")		11 000 (36'1")		10 930 (35'10")
With 2.66 m (8'4") arm	11 090 (36'5")		10 970 (36'0")		11 000 (36'1")		10 930 (35'10")
With 3.20 m (10'6") arm	11 050 (36'3")		10 970 (36'0")		11 000 (36'1")		10 930 (35'10")
With 4.00 m (13'2") arm	11 050 (36'3")		10 970 (36'0")		11 000 (36'1")		10 930 (35'10")
M Overall height of boom	3 470 (11'5")		3 230 (10'7")		3 310 (10'10")		3 380 (11'1")
With 2.66 m (8'4") arm	3 470 (11'5")		3 230 (10'7")		3 310 (10'10")		3 380 (11'1")
With 3.20 m (10'6") arm	3 470 (11'5")		3 230 (10'7")		3 310 (10'10")		3 380 (11'1")
With 4.00 m (13'2") arm	3 470 (11'5")		3 230 (10'7")		3 310 (10'10")		3 380 (11'1")
N Track height	1 020 (3'4")		1 030 (3'5")		1 030 (3'5")		1 140 (3'9")
With triple grouser shoes	1 020 (3'4")		1 030 (3'5")		1 030 (3'5")		1 140 (3'9")

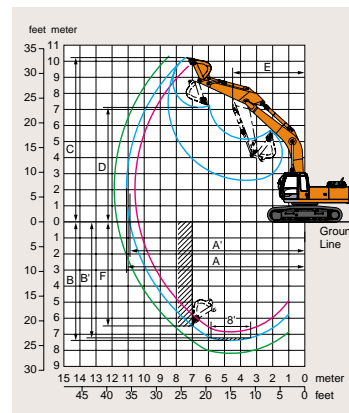
* Excluding track shoe lug. G: Triple grouser shoe

Buckets

Capacity SAE, PCSA heaped m ³ (yd ³)	CECE heaped m ³	Width		No. of teeth	Weight kg (lb)	Recommendation															
		Without side cutters mm (in)	With side cutters mm (in)			ZAXIS330	ZAXIS330LC	ZAXIS350H / ZAXIS350LCH	ZAXIS370MTH	ZAXIS350K / ZAXIS350LCK											
1.15 (1.50)	1.00	1 100 (43")	1 230 (48")	5	1 070 (2 360)	○	○	○	○	○	○	○	○	○	○	○	○	○	○	○	○
1.40 (1.83)	1.20	1 280 (50")	1 410 (56")	5	1 170 (2 580)	○	○	○	○	○	○	○	○	○	○	○	○	○	○	○	○
*1 1.40 (1.83)	1.20	1 280 (50")	1 410 (56")	5	1 130 (2 490)	○	○	○	○	○	○	○	○	○	○	○	○	○	○	○	○
*2 1.40 (1.83)	1.20	1 280 (50")	1 410 (56")	5	1 120 (2 470)	○	○	○	○	○	○	○	○	○	○	○	○	○	○	○	○
*3 1.40 (1.83)	1.20	1 280 (50")	1 410 (56")	5	1 150 (2 540)	○	○	○	○	○	○	○	○	○	○	○	○	○	○	○	○
1.62 (2.12)	1.40	1 460 (57")	1 590 (63")	5	1 270 (2 800)	○	○	○	○	○	○	○	○	○	○	○	○	○	○	○	○
1.86 (2.42)	1.60	1 640 (65")	—	5	1 200 (2 650)	○	○	○	○	○	○	○	○	○	○	○	○	○	○	○	○
*4 1.40 (1.83)	1.20	1 280 (50")	1 410 (56")	5	1 390 (3 070)	○	○	○	○	○	○	○	○	○	○	○	○	○	○	○	○
*4 1.62 (2.12)	1.40	1 460 (57")	1 590 (63")	5	1 525 (3 360)	○	○	○	○	○	○	○	○	○	○	○	○	○	○	○	○
*5 1.15 (1.50)	1.00	1 150 (45")	1 190 (47")	5	1 230 (2 710)	●	●	○	○	○	○	○	○	○	○	○	○	○	○	○	○
*1.5 1.38 (1.80)	1.20	1 310 (52")	1 360 (54")	5	1 320 (2 910)	●	●	○	○	○	○	○	○	○	○	○	○	○	○	○	○
*3.5 1.38 (1.80)	1.20	1 270 (50")	1 360 (55")	5	1 360 (3 000)	●	●	○	○	○	○	○	○	○	○	○	○	○	○	○	○
*1.5 1.50 (1.96)	1.30	1 420 (56")	1 470 (58")	5	1 390 (3 060)	●	●	○	○	○	○	○	○	○	○	○	○	○	○	○	○
*3.5 1.50 (1.96)	1.30	1 380 (54")	1 470 (59")	5	1 430 (3 150)	●	●	○	○	○	○	○	○	○	○	○	○	○	○	○	○
*6 0.90 (1.18)	0.80	1 010 (40")	—	3	1 470 (3 240)	●	●	○	○	○	○	○	○	○	○	○	○	○	○	○	○
One-point ripper bucket	—	—	—	1	850 (1 870)	●	●	○	○	○	○	○	○	○	○	○	○	○	○	○	○
Clamshell bucket: 1.00 m ³ (1.31 yd ³ : CECE heaped), Width 975 mm (38")	—	—	—	9	1 490 (3 280)	○	○	○	○	○	○	○	○	○	○	○	○	○	○	○	○

- Suitable for materials with density of 1 800 kg/m³ (3 030 lb/yd³) or less
- Suitable for materials with density of 1 600 kg/m³ (2 700 lb/yd³) or less
- Suitable for materials with density of 1 100 kg/m³ (1 850 lb/yd³) or less
- Heavy-duty service
- Not applicable

WORKING RANGES



Arm length	ZAXIS330 / ZAXIS350LC			ZAXIS350H / ZAXIS350LCH	ZAXIS350K / ZAXIS350LCK	ZAXIS370MTH
	2.66 m (8'4")	3.20 m (10'6")	4.00 m (13'2")	3.20 m (10'6") H-arm	3.20 m (10'6") K-arm	3.20 m (10'6") H-arm
A Max. digging reach (on ground)	10 570 (34'8")	11 100 (36'5")	11 860 (38'11")	11 100 (36'5")		
A' Max. digging reach (on ground)	10 370 (34'0")	10 900 (35'9")	11 680 (38'4")	10 900 (35'9")		10 890 (35'9")
B Max. digging depth	6 850 (22'6")	7 380 (24'3")	8 180 (26'10")	7 380 (24'3")		7 270 (23'10")
B' Max. digging depth (8' level)	6 650 (21'10")	7 220 (23'8")	8 050 (26'5")	7 220 (23'8")		7 110 (23'4")
C Max. cutting height	9 870 (32'5")	10 230 (33'7")	10 620 (34'10")	10 230 (33'7")		10 360 (34'0")
D Max. dumping height	6 830 (22'5")	7 130 (23'5")	7 500 (24'7")	7 130 (23'5")		7 240 (23'9")
E Min. swing radius	4 570 (15'0")	4 490 (14'9")	4 520 (14'10")	4 490 (14'9")		
F Max. vertical wall	5 620 (18'5")	6 480 (21'3")	7 370 (24'2")	6 480 (21'3")		6 410 (21'0")
Bucket digging force*	ISO (24 200 kgf, 53 400 lbf)			SAE: PCSA (21 100 kgf, 46 500 lbf)		
Arm crowd force*	ISO (206 kN, 46 300 lbf)	172 kN (38 700 lbf)	147 kN (33 100 lbf)	172 kN (38 700 lbf)		172 kN (38 700 lbf)
SAE: PCSA	197 kN (44 300 lbf)	165 kN (37 100 lbf)	141 kN (31 700 lbf)	165 kN (37 100 lbf)		165 kN (37 100 lbf)

Excluding track shoe lug * At power boost

SE STANDARD EQUIPMENT

Standard equipment may vary by country, so please consult your Hitachi dealer for details.

<p>ENGINE</p> <ul style="list-style-type: none"> • H/P mode control • E mode control • 50 A alternator • Dry-type air filter with evacuator valve (with Air cleaner restriction switch for monitor) • Cartridge-type engine oil filter • Cartridge-type fuel filter • Air cleaner double filters • Radiator and oil cooler with dust protective net • Radiator reserve tank • Fan guard • Isolation-mounted engine • Auto-idle system • Auto acceleration system <p>HYDRAULIC SYSTEM</p> <ul style="list-style-type: none"> • Work mode selector • Engine speed sensing system • E-P control system • Power boost • Auto power lift • Quick warm-up system for pilot circuit • Shockless valve in pilot circuit • Boom-arm anti-drift valve • Control valve with main relief valve • Extra port for control valve • Suction filter • Full-flow filter • Pilot filter <p>CAB</p> <p>CRES (Center pillar Reinforced Structure) cab</p> <ul style="list-style-type: none"> • OPG top guard fitted level I (ISO) compliant cab. • All-weather sound-suppressed steel cab • Reinforced, tinted (bronze color) glass windows • 4 fluid-filled elastic mounts • Openable front windows-upper, and lower and left side windows 	<ul style="list-style-type: none"> • Intermittent windshield retractable wipers • Front window washer • Adjustable reclining seat with adjustable armrests • Footrest • Electric double horn • AM - FM radio with digital clock • Auto-idle / acceleration selector • Seat belt • Drink holder • Cigar lighter • Ashtray • Storage box • Glove compartment • Floor mat • Heater • Pilot control shut-off lever • Engine stop knob. <p>MONITOR SYSTEM</p> <ul style="list-style-type: none"> • Meters: <ul style="list-style-type: none"> Hourmeter and trip-meter, engine coolant temperature gauge and fuel gauge. • Warning lamps: <ul style="list-style-type: none"> Alternator charge, engine oil pressure, engine overheat, air filter restriction and minimum fuel level. • Pilot lamps: <ul style="list-style-type: none"> Engine preheat, work light, auto-idle, auto-acceleration, digging mode and attachment mode • Alarm buzzers: <ul style="list-style-type: none"> Engine oil pressure and engine overheat <p>LIGHTS</p> <ul style="list-style-type: none"> • 2 working lights 	<p>UPPERSTRUCTURE</p> <ul style="list-style-type: none"> • Undercover • 6 800 kg (15 000 lb) counterweight • Fuel level float • Hydraulic oil level gauge • Tool box • Utility space • Rearview mirror (right & left side) • Swing parking brake <p>UNDERCARRIAGE</p> <ul style="list-style-type: none"> • Travel parking brake • Travel motor covers • Track guards and hydraulic track adjuster • Bolt-on sprocket • Upper rollers and lower rollers • Reinforced track links with pin seals • 600 mm (24") triple grouser shoes <p>FRONT ATTACHMENTS</p> <ul style="list-style-type: none"> • HN bushing • WC thermal spraying • Reinforced resin thrust plate • Flanged pin • Bucket clearance adjust mechanism • Monolithically cast bucket link A • Centralized lubrication system • Dirt seal on all bucket pins • 3.20 m (10'6") arm • 1.40 m³ (1.83 yd³ : SAE, PCSA heaped) bucket <p>MISCELLANEOUS</p> <ul style="list-style-type: none"> • Standard tool kit • Lockable machine covers • Lockable fuel filling cap • Skid-resistant tapes, plates and handrails. • Travel direction mark on track frame 	<p>ZAXIS350H/ZAXIS350LCH (Heavy-duty version), ZAXIS370MTH (Mighty track with Heavy-duty version)</p> <ul style="list-style-type: none"> • H-boom 6.40 m (21'0") and H-arm 3.20 m (10'6") • Damage prevention plate and square bars • 1.38 m³ (1.80 yd³ : SAE, PCSA heaped) Rock bucket (H version) • 1.50 m³ (1.96 yd³ : SAE, PCSA heaped) Rock bucket (MTH version) • Reinforced link B • Front glass lower guard • 4.5 mm (0.18") thickness undercover • 7 550 kg (16 600 lb) counterweight • 600 mm (24") reinforced triple grouser shoe • Reinforced track guard (3 units each side) (H version) • Reinforced track guard (single : 2 units, Double : 1 units each side) (MTH version) • Reinforced side steps (bolt mounted) • Air cleaner double filters • Electric grease gun <p>ZAXIS350K / ZAXIS350LCK (Demolition version)</p> <ul style="list-style-type: none"> • K-cab (CRES cab with overhead window and guard) • K-boom 6.40 m (21'0") and K-arm 3.20 m (10'6") • 1.40 m³ (1.83 yd³ : PCSA heaped) K-reinforced bucket • Reinforced link B for demolition • Front glass lower guard • Attachment basic piping • Damage prevention plate • Track undercover • Reinforced side step (bolt mounted) • 600 mm (24") reinforced triple grouser shoe • 8 200 kg (18 100 lb) counterweight • High-performance full-flow filter (with restriction indicator) • Air cleaner double filters
---	--	--	--

OE OPTIONAL EQUIPMENT

Optional equipment may vary by country, so please consult your Hitachi dealer for details.

<ul style="list-style-type: none"> • Auto control air conditioner • Suspension seat • Hose rupture valves • Electric fuel refilling pump • Swing motion alarm device with lamps • Travel motion alarm device • Additional pump • Auto-lubrication system • KAB 515 suspension seat 	<ul style="list-style-type: none"> • Pre-cleaner • Fuel double filters • Tropical cover • Large-capacity battery • Attachment basic piping • Accessories for breaker • Accessories for breaker & crusher • Accessories for 2 speed selector 	<ul style="list-style-type: none"> • 7550 kg (16 600 lb) counterweight • Front glass lower guard • Front glass upper guard • K-cab (CRES cab with overhead window and guard) • 600 mm (24") reinforced triple grouser shoes • Reinforced track guard (2 units each side) • Full track guard • Additional light (on the top of the cab) • Rear light
---	---	--

Comparative information based on current Japan domestic model.

These specifications are subject to change without notice.

Illustrations and photos show the standard models, and may or may not include optional equipment, accessories, and all standard equipment with some differences in color and features. Before use, go through Operator's Manual for proper operation.

Hitachi Construction Machinery Co., Ltd.

Head Office: 5-1 Koraku 2-chome, Bunkyo-ku,
Tokyo 112-8563, Japan

Telephone: (03)3830-8050

Facsimile: (03)3830-8202

KS-E370S

04.01 (HP/HP, GT₃)