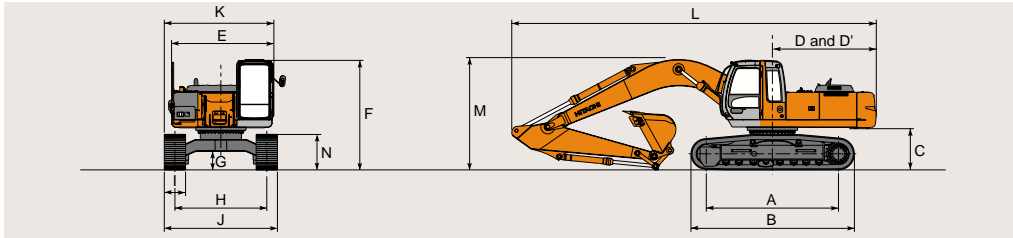




## DIMENSIONS

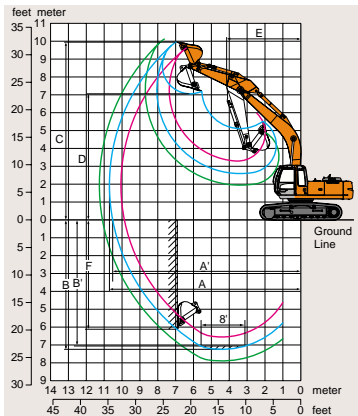


Unit: mm (ft in)

	ZAXIS270	ZAXIS270LC
A Distance between tumblers	3 730 (12'3")	4 050 (13'3")
B Undercarriage length	4 640 (15'3")	4 940 (16'2")
*C Counterweight clearance	1 180 (3'10")	1 180 (3'10")
D Rear-end swing radius	2 940 (9'8")	2 940 (9'8")
D' Rear-end length	2 930 (9'7")	2 930 (9'7")
E Overall width of upperstructure	2 890 (9'6")	2 890 (9'6")
F Overall height of cab	3 110 (10'2")	3 110 (10'2")
*G Min. ground clearance	510 (1'8")	510 (1'8")
H Track gauge	2 590 (8'6")	2 590 (8'6")
I Track shoe width	G 600 (24")	G 600 (24")
J Undercarriage width	3 190 (10'6")	3 190 (10'6")
K Overall width	3 190 (10'6")	3 190 (10'6")
L Overall length		
With 2.40 m (7'10") arm	10 370 (34'0")	10 370 (34'0")
With 3.10 m (10'2") arm	10 290 (33'9")	10 290 (33'9")
With 3.75 m (12'4") arm	10 340 (33'11")	10 340 (33'11")
M Overall height of boom		
With 2.40 m (7'10") arm	3 420 (11'3")	3 420 (11'3")
With 3.10 m (10'2") arm	3 170 (10'5")	3 170 (10'5")
With 3.75 m (12'4") arm	3 350 (11'0")	3 350 (11'0")
N Track height		
With triple grouser shoes	1 000 (3'3")	1 000 (3'3")

\* Excluding track shoe lug. G: Triple grouser shoe

## WORKING RANGES

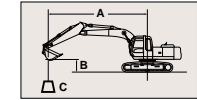


Unit: mm (ft in)

	ZAXIS270 / ZAXIS270LC			
	2.40 m (7'10")	3.10 m (10'2")	3.75 m (12'4")	
A Max. digging reach	10 060 (33'0")	10 710 (35'2")	11 270 (37'0")	
A' Max. digging reach (on ground)	9 860 (32'4")	10 520 (34'6")	11 090 (36'5")	
B Max. digging depth	6 540 (21'5")	7 230 (23'9")	7 880 (25'10")	
B' Max. digging depth (8' level)	6 320 (20'9")	7 050 (23'2")	7 720 (25'4")	
C Max. cutting height	9 640 (31'8")	9 980 (32'9")	10 150 (33'4")	
D Max. dumping height	6 750 (22'2")	7 070 (23'2")	7 250 (23'9")	
E Min. swing radius	4 310 (14'2")	4 410 (13'7")	4 120 (13'6")	
F Max. vertical wall	5 280 (17'4")	6 110 (20'1")	6 660 (21'10")	
Bucket digging force*	193 kN (19 700 kgf, 43 400 lbf)			
	167 kN (17 000 kgf, 37 500 lbf)			
Arm crowd force*	ISO	153 kN (15 600 kgf, 34 400 lbf)	121 kN (12 300 kgf, 27 100 lbf)	105 kN (10 800 kgf, 23 800 lbf)
	SAE : PCSA	147 kN (15 000 kgf, 33 100 lbf)	116 kN (11 800 kgf, 26 000 lbf)	102 kN (10 400 kgf, 22 900 lbf)

Excluding track shoe lug \* At power boost

## METRIC MEASURE



A: Load radius  
B: Load point height  
C: Lifting capacity

Rating over-side or 360 degrees Rating over-front Unit: 1 000 kg

## ZAXIS270

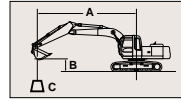
Conditions	Load point height	Load radius										At max. reach				
		4 m	5 m	6 m	7 m	8 m	9 m	10 m	meter	meter	meter					
Arm 2.40 m	6 m					*5.24	*5.24						3.43	*4.04	8 944	
Bucket	4 m			*7.77	*7.77	*6.64	*6.64	5.15	*6.01	4.07	*5.68			2.90	*4.12	9 569
SAE, PCSA :	2 m					6.07	*8.65	4.79	7.20	3.85	5.80	3.13	4.76	2.74	4.20	9 681
1.10 m <sup>3</sup>	0 (Ground)			7.54	11.9	5.72	8.82	4.53	6.91	3.67	5.61			2.88	4.43	9 302
CECE : 1.00 m <sup>3</sup>	- 2 m	*11.0	*11.0	7.55	11.9	5.65	8.74	4.45	6.83	3.63	5.56			3.46	5.28	8 353
Shoe 600 mm	- 4 m	11.3	*12.9	7.75	*10.9	5.80	8.91	4.61	7.00							

Conditions	Load point height	Load radius										At max. reach						
		4 m	5 m	6 m	7 m	8 m	9 m	10 m	meter	meter	meter							
Arm 3.10 m	6 m									4.28	*4.42			*2.40	*2.40	9 647		
Bucket	4 m					*5.78	*5.78	5.24	*5.34	4.13	*5.08	3.29	*4.41			*2.45	*2.45	10 222
SAE, PCSA :	2 m			8.18	*9.96	6.19	*7.89	4.85	*6.71	3.88	5.83	3.14	4.77	2.41	*2.66	10 326		
1.10 m <sup>3</sup>	0 (Ground)			7.58	12.0	5.74	8.86	4.53	6.93	3.66	5.60	3.00	4.62	2.51	*3.05	9 975		
CECE : 1.00 m <sup>3</sup>	- 2 m	10.8	*12.4	7.45	11.8	5.58	8.68	4.39	6.77	3.56	5.49	2.95	4.57	2.93	*3.81	9 109		
Shoe 600 mm	- 4 m	11.1	*14.2	7.58	*11.6	5.65	8.76	4.44	6.83					4.15	*5.48	7 512		

Conditions	Load point height	Load radius										At max. reach						
		4 m	5 m	6 m	7 m	8 m	9 m	10 m	meter	meter	meter							
Arm 3.75 m	6 m									*3.95	*3.95	*2.78	*2.78			*1.90	*1.90	10 254
Bucket	4 m							*4.68	*4.68	4.20	*4.53	3.34	*4.32			*1.95	*1.95	10 793
SAE, PCSA :	2 m	11.9	*12.1	8.45	*8.78	6.34	*7.11	4.93	*6.13	3.92	*5.51	3.16	4.80	2.56	*3.55	*2.12	*2.12	10 890
1.10 m <sup>3</sup>	0 (Ground)	*7.50	*7.50	7.66	*11.5	5.80	8.92	4.55	6.96	3.66	5.61	2.98	4.61	2.46	*3.74	2.22	*2.46	10 561
CECE : 1.00 m <sup>3</sup>	- 2 m	10.7	*11.8	7.40	11.8	5.55	8.65	4.35	6.74	3.51	5.44	2.89	4.51			2.55	*3.08	9 756
Shoe 600 mm	- 4 m	10.9	*15.0	7.44	11.8	5.54	8.64	4.34	6.73	3.52	5.45					3.42	*4.39	8 309
	- 6 m	11.3	*12.0	7.75	*9.82	5.79	*8.01											

- Notes: 1. Ratings are based on SAE J1097.  
2. Lifting capacity of the ZAXIS Series does not exceed 75% of tipping load with the machine on firm, level ground or 87% full hydraulic capacity.  
3. The load point is a hook (not standard equipment) located on the back of the bucket.  
4. \* Indicates load limited by hydraulic capacity.

## METRIC MEASURE



A: Load radius  
B: Load point height  
C: Lifting capacity

### ZAXIS270LC

Rating over-side or 360 degrees Rating over-front Unit: 1 000 kg

Conditions	Load point height	Load radius												At max. reach						
		4 m		5 m		6 m		7 m		8 m		9 m		10 m				meter		
Arm 2.40 m Bucket SAE, PCSA : 1.10 m <sup>3</sup> CECE : 1.00 m <sup>3</sup> Shoe 600 mm	6 m																	3.51	*4.04	8 944
	4 m																	2.98	*4.12	9 569
	2 m																	2.82	*4.44	9 681
	0 (Ground)																	2.96	*5.07	9 302
	-2 m	*11.0	*11.0	7.72	*12.3	5.78	10.2	4.56	7.91	3.72	6.42							3.55	6.08	8 353
	-4 m	11.5	*12.9	7.92	*10.9	5.93	*9.06	4.72	*7.40											

Conditions	Load point height	Load radius												At max. reach						
		4 m		5 m		6 m		7 m		8 m		9 m		10 m				meter		
Arm 3.10 m Bucket SAE, PCSA : 1.10 m <sup>3</sup> CECE : 1.00 m <sup>3</sup> Shoe 600 mm	6 m																	*2.40	*2.40	9 647
	4 m																	*2.45	*2.45	10 222
	2 m																	2.48	*2.66	10 326
	0 (Ground)																	2.58	*3.05	9 975
	-2 m	11.1	*12.4	7.62	*12.5	5.72	10.1	4.50	7.85	3.65	6.35	3.03	*4.86				3.01	*3.81	9 109	
	-4 m	11.3	*14.2	7.75	*11.6	5.79	*9.58	4.56	7.91								4.25	*5.48	7 512	

Conditions	Load point height	Load radius												At max. reach						
		4 m		5 m		6 m		7 m		8 m		9 m		10 m				meter		
Arm 3.75 m Bucket SAE, PCSA : 1.10 m <sup>3</sup> CECE : 1.00 m <sup>3</sup> Shoe 600 mm	6 m																	*1.90	*1.90	10 254
	4 m																	*1.95	*1.95	10 793
	2 m	*12.1	*12.1	8.62	*8.78	6.47	*7.11	5.04	*6.13	4.01	*5.51	3.24	*5.10	2.64	*3.55	*2.12	*2.12	10 890		
	0 (Ground)	*7.50	*7.50	7.83	*11.5	5.93	*9.04	4.67	*7.51	3.75	6.47	3.07	5.33	2.53	*3.74	2.29	*2.46	10 561		
	-2 m	10.9	*11.8	7.57	*12.4	5.68	*10.0	4.46	7.82	3.60	6.31	2.97	5.22				2.62	*3.08	9 756	
	-4 m	11.1	*15.0	7.61	*12.0	5.68	*9.85	4.45	7.80	3.61	6.31						3.51	*4.39	8 309	
	-6 m	11.5	*12.0	7.92	*9.82	5.93	*8.01													

Notes: 1. Ratings are based on SAE J1097.  
2. Lifting capacity of the ZAXIS Series does not exceed 75% of tipping load with the machine on firm, level ground or 87% full hydraulic capacity.  
3. The load point is a hook (not standard equipment) located on the back of the bucket.  
4. \*Indicates load limited by hydraulic capacity.

## STANDARD EQUIPMENT

Standard equipment may vary by country, so please consult your Hitachi dealer for details.

### ENGINE

- H/P mode control
- E mode control
- 50 A alternator
- Dry-type air filter with evacuator valve (with safety element)
- Cartridge-type engine oil filter
- Cartridge-type fuel filter
- Air cleaner double filters
- Radiator and oil cooler with dust protective net
- Radiator reserve tank
- Fan guard
- Isolation-mounted engine
- Auto-idle system
- Auto acceleration system

### CAB

- **CRES (Center pillar Reinforced Structure) cab**
- OPG top guard fitted level I (ISO) compliant cab.
- All-weather sound-suppressed steel cab
- Reinforced, tinted (bronze color) glass windows
- 4 fluid-filled elastic mounts
- Openable front windows-upper, and lower and left side windows
- Intermittent windshield retractable wipers
- Front window washer
- Adjustable reclining seat with adjustable armrests
- Footrest
- Electric double horn
- AM - FM radio with digital clock
- Auto-idle / acceleration selector
- Seat belt
- Drink holder
- Cigar lighter
- Ashtray
- Storage box
- Glove compartment
- Floor mat
- Heater
- Pilot control shut-off lever
- Engine stop knob

### HYDRAULIC SYSTEM

- Work mode selector
- Engine speed sensing system
- E-P control system
- Power boost
- Auto power lift
- Quick warm-up system for pilot circuit
- Shockless valve in pilot circuit
- Boom-arm anti-drift valve
- Control valve with main relief valve
- Extra port for control valve
- Suction filter
- Full-flow filter
- Pilot filter

### MONITOR SYSTEM

- Meters:  
Hourmeter and trip-meter, engine coolant temperature gauge and fuel gauge.
- Warning lamps:  
Alternator charge, engine oil pressure, engine overheat, air filter restriction and minimum fuel level.
- Pilot lamps:  
Engine preheat, work light, auto-idle, auto-acceleration, digging mode and attachment mode
- Alarm buzzers:  
Engine oil pressure and engine overheat

### LIGHTS

- 2 working lights

### UPPERSTRUCTURE

- Undercover
- 6 100 kg (13 400 lb) counterweight
- Fuel level float
- Hydraulic oil level gauge
- Tool box
- Utility space
- Rearview mirror (right & left side)
- Swing parking brake

### UNDERCARRIAGE

- Travel parking brake
- Travel motor covers
- Track guards and hydraulic track adjuster
- Bolt-on sprocket
- Upper rollers and lower rollers
- Reinforced track links with pin seals
- 600 mm (24") triple grouser shoes

### FRONT ATTACHMENTS

- HN bushing
- WC thermal spraying
- Reinforced resin thrust plate
- Flanged pin
- Bucket clearance adjust mechanism
- Monolithically cast bucket link A
- Centralized lubrication system
- Dirt seal on all bucket pins
- 3.10 m (10'2") arm
- 1.10 m<sup>3</sup> (1.44 yd<sup>3</sup>) : SAE, PCSA heaped) bucket

### MISCELLANEOUS

- Standard tool kit
- Lockable machine covers
- Lockable fuel filling cap
- Skid-resistant tapes, plates and handrails.
- Travel direction mark on track frame

## OPTIONAL EQUIPMENT

Optional equipment may vary by country, so please consult your Hitachi dealer for details.

- Auto control air conditioner
- Suspension seat
- Hose rupture valves
- Electric fuel refilling pump
- Swing motion alarm device with lamps
- Travel motion alarm device
- Additional pump
- Transparent roof
- Auto-lubrication system
- Pre-cleaner
- Fuel double filters
- Tropical cover
- Large-capacity battery
- Attachment basic piping
- Accessories for breaker
- Accessories for breaker & crusher
- Accessories for 2 speed selector
- 400 kg (880 lb) added heavier counterweight
- Front glass lower guard
- Front glass upper guard
- Track guard (3 units each side)
- Full track guard
- Additional light (on the top of Cab)
- Rear light