



## WEIGHTS AND GROUND PRESSURE

Equipped with 6.00 m (19'8") boom, 2.96 m (9'8") arm and 1.00 m<sup>3</sup> (1.30 yd<sup>3</sup>; SAE, PCSA heaped) bucket.

Shoe type	Shoe width	Operating weight	Ground pressure
Triple grouser	600 mm (24")	23 000 kg (50 700 lb)	50 kPa (0.51 kgf/cm <sup>2</sup> , 7.25 psi)
		23 600 kg (52 000 lb)	47 kPa (0.48 kgf/cm <sup>2</sup> , 6.83 psi)
		23 400 kg (51 600 lb)	44 kPa (0.45 kgf/cm <sup>2</sup> , 6.40 psi)
	800 mm (31")	24 000 kg (52 900 lb)	41 kPa (0.42 kgf/cm <sup>2</sup> , 5.97 psi)
		23 700 kg (52 300 lb)	39 kPa (0.40 kgf/cm <sup>2</sup> , 5.69 psi)
		24 300 kg (53 600 lb)	36 kPa (0.37 kgf/cm <sup>2</sup> , 5.26 psi)
Flat	600 mm (24")	23 800 kg (52 500 lb)	52 kPa (0.54 kgf/cm <sup>2</sup> , 7.68 psi)
		24 500 kg (54 000 lb)	48 kPa (0.49 kgf/cm <sup>2</sup> , 6.97 psi)
	760 mm (30")	24 000 kg (52 900 lb)	41 kPa (0.42 kgf/cm <sup>2</sup> , 5.97 psi)
Triangular	900 mm (35")	24 700 kg (54 500 lb)	38 kPa (0.39 kgf/cm <sup>2</sup> , 5.55 psi)
		25 000 kg (55 000 lb)	36 kPa (0.37 kgf/cm <sup>2</sup> , 5.26 psi)
	900 mm (35")	25 800 kg (56 900 lb)	33 kPa (0.34 kgf/cm <sup>2</sup> , 4.84 psi)

Figures in   are data on the ZAXIS230LC.

Weights of the basic machines (including 5 400 kg (11 900 lb), 6 100 kg (13 500 lb) H-type, 6 500 kg (14 300 lb) K-type counterweight and triple grouser shoes, excluding front-end attachment, fuel, hydraulic oil, engine oil and coolant etc.) are:

ZAXIS230 ..... 17 500 kg (38 600 lb) with 600 mm (24") shoes  
 ZAXIS230LC ..... 18 100 kg (39 900 lb) with 600 mm (24") shoes  
 ZAXIS240H ..... 18 500 kg (40 800 lb) with 600 mm (24") reinforced shoes  
 ZAXIS240LCH ..... 19 100 kg (42 100 lb) with 600 mm (24") reinforced shoes  
 ZAXIS240K ..... 19 000 kg (41 900 lb) with 600 mm (24") reinforced shoes  
 ZAXIS240LCK ..... 19 600 kg (43 200 lb) with 600 mm (24") reinforced shoes

## ZAXIS240H / ZAXIS240LCH (Heavy-duty version):

Equipped with 6.00 m (19'8") H-boom, 2.96 m (9'8") H-arm, and 1.00 m<sup>3</sup> (1.30 yd<sup>3</sup>; SAE, PCSA heaped) H-bucket.

	Shoe width	Operating weight	Ground pressure
ZAXIS240H	Reinforced Triple grouser 600 mm (24")	24 300 kg (53 600 lb)	53 kPa (0.54 kgf/cm <sup>2</sup> , 7.68 psi)
ZAXIS240LCH	Reinforced Triple grouser 600 mm (24")	24 900 kg (54 900 lb)	49 kPa (0.50 kgf/cm <sup>2</sup> , 7.11 psi)

## ZAXIS240K / ZAXIS240LCK (Demolition version):

Equipped with 6.00 m (19'8") K-boom, 2.96 m (9'8") K-arm, and 1.00 m<sup>3</sup> (1.30 yd<sup>3</sup>; SAE, PCSA heaped) K-bucket.

	Shoe width	Operating weight	Ground pressure
ZAXIS240K	Reinforced Triple grouser 600 mm (24")	24 800 kg (54 700 lb)	54 kPa (0.55 kgf/cm <sup>2</sup> , 7.82 psi)
ZAXIS240LCK	Reinforced Triple grouser 600 mm (24")	25 400 kg (56 000 lb)	50 kPa (0.51 kgf/cm <sup>2</sup> , 7.25 psi)

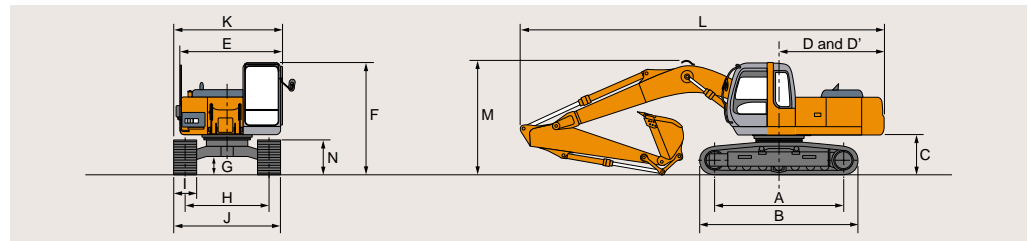
## SERVICE REFILL CAPACITIES

	liters	US gal	Imp gal
Fuel tank	380.0	100.0	83.6
Engine coolant	23.0	6.1	5.1
Engine oil	25.0	6.6	5.5
Swing mechanism	8.6	2.3	1.9
Travel final device	7.2	1.9	1.6
(each side)			
Hydraulic system	303.0	80.0	66.7
Hydraulic tank	148.0	39.1	32.6

## BACKHOE ATTACHMENTS

Boom and arms are of welded, box-section design. 6.00 m (19'8") boom, and 2.32 m (7'7"), 2.96 m (9'8") and 3.61 m (11'10") arms are available. Bucket is of welded steel structure. Side clearance adjust mechanism provided on the bucket joint bracket.

## DIMENSIONS



	ZAXIS230	ZAXIS230LC	ZAXIS240H	ZAXIS240LCH	ZAXIS240K	ZAXIS240LCK
A	3 460 (11'4")	3 840 (12'7")	3 460 (11'4")	3 840 (12'7")	3 460 (11'4")	3 840 (12'7")
B	4 260 (14'0")	4 640 (15'3")	4 260 (14'0")	4 640 (15'3")	4 260 (14'0")	4 640 (15'3")
C	1 090 (3'7")	1 090 (3'7")	1 090 (3'7")	1 090 (3'7")	1 090 (3'7")	1 090 (3'7")
D	2 940 (9'8")	2 940 (9'8")	2 940 (9'8")	2 940 (9'8")	2 940 (9'8")	2 940 (9'8")
D'	2 930 (9'7")	2 930 (9'7")	2 930 (9'7")	2 930 (9'7")	2 930 (9'7")	2 930 (9'7")
E	2 890 (9'6")	2 890 (9'6")	2 890 (9'6")	2 890 (9'6")	2 890 (9'6")	2 890 (9'6")
F	3 020 (9'11")	3 020 (9'11")	3 020 (9'11")	3 020 (9'11")	3 150 (10'4")	3 150 (10'4")
G	460 (1'6")	460 (1'6")	460 (1'6")	460 (1'6")	460 (1'6")	460 (1'6")
H	2 390 (7'10")	2 390 (7'10")	2 390 (7'10")	2 390 (7'10")	2 390 (7'10")	2 390 (7'10")
I	600 (24")	600 (24")	600 (24")	600 (24")	600 (24")	600 (24")
J	2 990 (9'10")	2 990 (9'10")	2 990 (9'10")	2 990 (9'10")	2 990 (9'10")	2 990 (9'10")
K	2 990 (9'10")	3 190 (10'6")	2 990 (9'10")	3 190 (10'6")	2 990 (9'10")	3 190 (10'6")
L	10 260 (33'8")	10 260 (33'8")	10 260 (33'8")	10 260 (33'8")	10 260 (33'8")	10 260 (33'8")
M	3 290 (10'10")	3 290 (10'10")	3 290 (10'10")	3 290 (10'10")	3 100 (10'2")	3 100 (10'2")
N	900 (2'11")	900 (2'11")	900 (2'11")	900 (2'11")	900 (2'11")	900 (2'11")

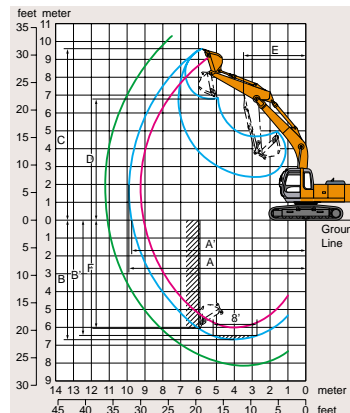
\* Excluding track shoe lug. G: Triple grouser shoe

## Buckets

Capacity		Width		No. of teeth	Weight	Recommendation										
SAE, PCSA heaped	CECE heaped	Without side cutters	With side cutters			ZAXIS230		ZAXIS230LC		ZAXIS240H / ZAXIS240LCH	ZAXIS240K / ZAXIS240LCK					
						2.32 m (7'7") arm	2.96 m (9'8") arm	3.61 m (11'10") arm	2.32 m (7'7") arm	2.96 m (9'8") arm	3.61 m (11'10") arm	2.96 m (9'8") H-arm	2.96 m (9'8") K-arm			
0.80 m <sup>3</sup> (1.05 yd <sup>3</sup> )	0.70 m <sup>3</sup>	940 mm (3'1")	1 080 mm (3'1")	4	760 kg (1 680 lb)	○	○	○	○	○	○	○	○	○	○	○
1.00 m <sup>3</sup> (1.31 yd <sup>3</sup> )	0.90 m <sup>3</sup>	1 160 mm (3'10")	1 300 mm (4'3")	5	870 kg (1 920 lb)	○	○	○	○	○	○	○	○	○	○	○
1.15 m <sup>3</sup> (1.50 yd <sup>3</sup> )	1.00 m <sup>3</sup>	1 270 mm (4'2")	1 410 mm (4'8")	5	910 kg (2 010 lb)	○	○	○	○	○	○	○	○	○	○	○
1.25 m <sup>3</sup> (1.63 yd <sup>3</sup> )	1.10 m <sup>3</sup>	1 380 mm (4'6")	1 520 mm (5'0")	5	960 kg (2 120 lb)	○	○	○	○	○	○	○	○	○	○	○
*1 1.40 m <sup>3</sup> (1.83 yd <sup>3</sup> )	1.20 m <sup>3</sup>	1 490 mm (4'11")	—	5	920 kg (2 030 lb)	□	—	—	□	—	—	—	—	—	—	—
*1 1.00 m <sup>3</sup> (1.31 yd <sup>3</sup> )	0.90 m <sup>3</sup>	1 160 mm (3'10")	1 300 mm (4'3")	5	1 000 kg (2 200 lb)	○	○	○	○	○	○	○	○	○	○	○
*2 1.15 m <sup>3</sup> (1.05 yd <sup>3</sup> )	1.00 m <sup>3</sup>	1 270 mm (4'2")	1 410 mm (4'8")	5	1 040 kg (2 290 lb)	○	○	○	○	○	○	○	○	○	○	○
*2 1.00 m <sup>3</sup> (1.31 yd <sup>3</sup> )	0.90 m <sup>3</sup>	1 170 mm (3'10")	1 300 mm (4'3")	5	1 000 kg (2 200 lb)	○	○	○	○	○	○	○	○	○	○	○
*3 1.00 m <sup>3</sup> (1.31 yd <sup>3</sup> )	0.90 m <sup>3</sup>	1 170 mm (3'10")	1 300 mm (4'3")	5	980 kg (2 160 lb)	○	○	○	○	○	○	○	○	○	○	○
*4 0.92 m <sup>3</sup> (1.20 yd <sup>3</sup> )	0.80 m <sup>3</sup>	1 160 mm (3'10")	1 210 mm (4'0")	5	1 000 kg (2 200 lb)	●	●	○	●	●	○	●	●	○	○	○
*5 0.80 m <sup>3</sup> (1.05 yd <sup>3</sup> )	0.70 m <sup>3</sup>	1 000 mm (3'3")	—	3	1 220 kg (2 690 lb)	●	●	—	●	●	—	●	●	—	—	—
One-point ripper				1	680 kg (1 500 lb)	●	●	—	●	●	—	●	●	—	—	—
Clamshell bucket: 0.60 m <sup>3</sup> (0.78 yd <sup>3</sup> ; CECE heaped), Width 870 mm (2'10")				8	960 kg (2 120 lb)	○	○	○	○	○	○	○	○	○	○	○

- \*1 Reinforced bucket
- \*2 H-bucket
- \*3 Level-pin-type bucket
- \*4 Rock bucket
- \*5 Ripper bucket
- Suitable for materials with density of 1 800 kg/m<sup>3</sup> (3 030 lb/yd<sup>3</sup>) or less
- Suitable for materials with density of 1 600 kg/m<sup>3</sup> (2 700 lb/yd<sup>3</sup>) or less
- Suitable for materials with density of 1 100 kg/m<sup>3</sup> (1 850 lb/yd<sup>3</sup>) or less
- Heavy-duty service
- Not applicable

## WORKING RANGES



	ZAXIS230 / ZAXIS230LC			ZAXIS240H / ZAXIS240LCH	ZAXIS240K / ZAXIS240LCK
Arm length	2.32 m (7'7")	2.96 m (9'8")	3.61 m (11'10")	6.00 m (19'8") H-boom 2.96 m (9'8") H-arm	6.00 m (19'8") K-boom 2.96 m (9'8") K-arm
A Max. digging reach	9 710 (31'10")	10 270 (33'8")	10 900 (35'9")	10 270 (33'8")	10 270 (33'8")
A' Max. digging reach (on ground)	9 530 (31'3")	10 100 (33'2")	10 730 (35'2")	10 100 (33'2")	10 100 (33'2")
B Max. digging depth	6 300 (20'8")	6 950 (22'10")	7 590 (24'11")	6 950 (22'10")	6 950 (22'10")
B' Max. digging depth (8' level)	6 070 (19'11")	6 740 (22'1")	7 430 (24'5")	6 740 (22'1")	6 740 (22'1")
C Max. cutting height	9 410 (30'11")	9 630 (31'7")	9 990 (32'9")	9 630 (31'7")	9 630 (31'7")
D Max. dumping height	6 540 (21'6")	6 760 (22'2")	7 100 (23'4")	6 760 (22'2")	6 760 (22'2")
E Min. swing radius	3 960 (13'0")	3 870 (12'8")	3 890 (12'9")	3 870 (12'8")	3 870 (12'8")
F Max. vertical wall	5 400 (17'9")	6 020 (19'9")	6 740 (22'1")	6 020 (19'9")	6 020 (19'9")
Bucket digging force*	ISO (18 400 kgf, 40 500 lbf) SAE : PCSA (15 900 kgf, 35 100 lbf)				
Arm crowd force*	ISO (16 000 kgf, 35 300 lbf) SAE : PCSA (15 300 kgf, 33 700 lbf)	ISO (12 700 kgf, 28 100 lbf) SAE : PCSA (12 200 kgf, 27 000 lbf)	ISO (11 000 kgf, 24 300 lbf)	ISO (12 700 kgf, 28 100 lbf)	ISO (12 700 kgf, 28 100 lbf)

Excluding track shoe lug \* At power boost



# ZAXIS230 SERIES

## STANDARD EQUIPMENT

Standard equipment may vary by country, so please consult your Hitachi dealer for details.

<b>ENGINE</b> <ul style="list-style-type: none"><li>• H/P mode control</li><li>• E mode control</li><li>• 50 A alternator</li><li>• Dry-type air filter with evacuator valve (with safety element)</li><li>• Cartridge-type engine oil filter</li><li>• Cartridge-type fuel filter</li><li>• Air cleaner double filters</li><li>• Radiator and oil cooler with dust protective net</li><li>• Radiator reserve tank</li><li>• Fan guard</li><li>• Isolation-mounted engine</li><li>• Auto-idle system</li><li>• Auto acceleration system</li></ul>	<ul style="list-style-type: none"><li>• Openable front windows-upper, and lower and left side windows</li><li>• Intermittent windshield retractable wipers</li><li>• Front window washer</li><li>• Adjustable reclining seat with adjustable armrests</li><li>• Footrest</li><li>• Electric double horn</li><li>• AM - FM radio with digital clock</li><li>• Auto-idle / acceleration selector</li><li>• Seat belt</li><li>• Drink holder</li><li>• Cigar lighter</li><li>• Ashtray</li><li>• Storage box</li><li>• Glove compartment</li><li>• Floor mat</li><li>• Heater</li><li>• Pilot control shut-off lever</li><li>• Engine stop knob</li></ul>	<b>UPPERSTRUCTURE</b> <ul style="list-style-type: none"><li>• Undercover</li><li>• 5 400 kg (11 900 lb) counterweight</li><li>• Fuel level float</li><li>• Hydraulic oil level gauge</li><li>• Tool box</li><li>• Utility space</li><li>• Rearview mirror (right &amp; left side)</li><li>• Swing parking brake</li></ul>	<b>ZAXIS240H / ZAXIS240LCH (Heavy-duty version)</b> <ul style="list-style-type: none"><li>• H-boom 6.00 m (19'8") and H-arm 2.96 m (9'8")</li><li>• Damage prevention plate and square bars</li><li>• 1.00 m<sup>3</sup> (1.30 yd<sup>3</sup> : SAE, PCSA heaped) H-bucket</li><li>• Reinforced link B</li><li>• Front glass lower guard</li><li>• 4.5 mm (0.18") thickness undercover</li><li>• 6 100 kg (13 500 lb) counterweight</li><li>• 600 mm (24") reinforced triple grouser shoe</li><li>• Reinforced track guard (2 units each side)</li><li>• Reinforced side steps (bolt mounted)</li><li>• Air cleaner double filters</li></ul>
<b>HYDRAULIC SYSTEM</b> <ul style="list-style-type: none"><li>• Work mode selector</li><li>• Engine speed sensing system</li><li>• E-P control system</li><li>• Power boost</li><li>• Auto power lift</li><li>• Quick warm-up system for pilot circuit</li><li>• Shockless valve in pilot circuit</li><li>• Boom-arm anti-drift valve</li><li>• Control valve with main relief valve</li><li>• Extra port for control valve</li><li>• Suction filter</li><li>• Full-flow filter</li><li>• Pilot filter</li></ul>	<b>MONITOR SYSTEM</b> <ul style="list-style-type: none"><li>• Meters: Hourmeter and trip-meter, engine coolant temperature gauge and fuel gauge.</li><li>• Warning lamps: Alternator charge, engine oil pressure, engine overheat, air filter restriction and minimum fuel level.</li><li>• Pilot lamps: Engine preheat, work light, auto-idle, auto-acceleration, digging mode and attachment mode</li><li>• Alarm buzzers: Engine oil pressure and engine overheat</li></ul>	<b>UNDERCARRIAGE</b> <ul style="list-style-type: none"><li>• Travel parking brake</li><li>• Travel motor covers</li><li>• Track guards and hydraulic track adjuster</li><li>• Bolt-on sprocket</li><li>• Upper rollers and lower rollers</li><li>• Reinforced track links with pin seals</li><li>• 600 mm (24") triple grouser shoes</li></ul>	<b>ZAXIS240K / ZAXIS240LCK (Demolition version)</b> <ul style="list-style-type: none"><li>• K-cab (CRES cab with overhead window and guard)</li><li>• K-boom 6.00 m (19'8") and K-arm 2.96 m (9'8")</li><li>• 1.00 m<sup>3</sup> (1.30 yd<sup>3</sup> : SAE, PCSA heaped) K-bucket</li><li>• Reinforced link B for demolition</li><li>• Reinforced bucket cylinder</li><li>• Front glass lower guard</li><li>• Attachment basic piping</li><li>• Damage prevention plate</li><li>• 6.0 mm (0.24") thickness undercover</li><li>• Track undercover</li><li>• Reinforced side step (bolt mounted)</li><li>• 600 mm (24") reinforced triple grouser shoe</li><li>• 6 500 kg (14 300 lb) counterweight</li><li>• High-performance full-flow filter (with restriction indicator)</li><li>• Air cleaner double filters</li></ul>
<b>CAB</b> <b>CRES (Center pillar Reinforced Structure) cab</b> <ul style="list-style-type: none"><li>• OPG top guard fitted level I (ISO) compliant cab.</li><li>• All-weather sound-suppressed steel cab</li><li>• Reinforced, tinted (bronze color) glass windows</li><li>• 4 fluid-filled elastic mounts</li></ul>	<b>LIGHTS</b> <ul style="list-style-type: none"><li>• 2 working lights</li></ul>	<b>FRONT ATTACHMENTS</b> <ul style="list-style-type: none"><li>• HN bushing</li><li>• WC thermal spraying</li><li>• Reinforced resin thrust plate</li><li>• Flanged pin</li><li>• Bucket clearance adjust mechanism</li><li>• Monolithically cast bucket link A</li><li>• Centralized lubrication system</li><li>• Dirt seal on all bucket pins</li><li>• 2.96 m (9'8") arm</li><li>• 1.00 m<sup>3</sup> (1.30 yd<sup>3</sup> : SAE, PCSA heaped) bucket</li></ul>	
		<b>MISCELLANEOUS</b> <ul style="list-style-type: none"><li>• Standard tool kit</li><li>• Lockable machine covers</li><li>• Lockable fuel filling cap</li><li>• Skid-resistant tapes, plates and handrails.</li><li>• Travel direction mark on track frame</li></ul>	

## OPTIONAL EQUIPMENT

Optional equipment may vary by country, so please consult your Hitachi dealer for details.

<ul style="list-style-type: none"><li>• Auto control air conditioner</li><li>• Suspension seat</li><li>• Hose rupture valves</li><li>• Electric fuel refilling pump</li><li>• Swing motion alarm device with lamps</li><li>• Travel motion alarm device</li><li>• Additional pump</li><li>• Auto-lubrication system</li><li>• KAB 515 suspension seat</li><li>• Transparent roof</li></ul>	<ul style="list-style-type: none"><li>• Pre-cleaner</li><li>• Fuel double filters</li><li>• Air cleaner double filters</li><li>• Tropical cover</li><li>• Large-capacity battery</li><li>• Attachment basic piping</li><li>• Accessories for breaker</li><li>• Accessories for breaker &amp; crusher</li><li>• Accessories for 2 speed selector</li></ul>	<ul style="list-style-type: none"><li>• Small swing radius bracket (ZAXIS240K/ZAXIS240LCK)</li><li>• 6 100 kg (13 500 lb) counterweight</li><li>• Front glass lower guard</li><li>• Front glass upper guard</li><li>• K-cab (CRES cab with overhead window and guard)</li><li>• 600 mm (24") reinforced triple grouser shoes</li><li>• Reinforced track guard (2 units each side)</li><li>• Full track guard</li><li>• Additional light (on the top of Cab)</li><li>• Rear light</li></ul>
--	---	--

Comparative information based on current Japan domestic model.  
These specifications are subject to change without notice.  
Illustrations and photos show the standard models, and may or may not include optional equipment, accessories, and all standard equipment with some differences in color and features.  
Before use, go through Operators Manual for proper operation.