

# ZAXIS 230

■ Engine Rated Power : 125 kW (170 PS)

■ Operating Weight ZAXIS230/ZAXIS230LC : 23 000 kg/23 600 kg  
ZAXIS240H/ZAXIS240LCH : 24 300 kg/24 900 kg  
ZAXIS240K/ZAXIS240LCK : 24 800 kg/25 400 kg

■ Backhoe Bucket SAE, PCSA Heaped : 0.80—1.40 m<sup>3</sup>  
CECE Heaped : 0.70—1.20 m<sup>3</sup>



# Futuristic Performance



## High Productivity

### A truly high-performance machine

- 6% more production in H/P mode (compared to EX220-5).
- 8% (Bucket) · 7% (Arm) more digging force (compared to EX220-5).
- 5% more travel power (compared to EX220-5).
- 8% more swing power (compared to EX220-5).
- 6% less fuel consumption during light load operation from auto acceleration system (compared to normal operation).

## Lower Running Costs

### Stronger structural component design

- Increased wear resistance of bucket joint: WC thermal spraying.
- 40-ton class D-type frame.
- New HN Bushing.

## Lower Maintenance Costs

### Reduced maintenance time and expense

- Extended lubrication interval at bucket joint section.
- Extended replacement interval for hydraulic oil filter.

## CRES Cab (Center pillar Reinforced Structure)

### Provides excellent operator comfort

- Low noise and vibration in cab.



#### Notes :

1. Never leave the front attachment in a raised position. Make sure the front attachment is lowered to the ground before leaving the equipment unattended. (Some of the pictures in this catalog show an unmanned machine with attachments in an operating position. These were taken for demonstration purposes only and the actions shown are not recommended under normal operating conditions.)
2. Caution plates on the machine will vary according to country.
3. Photos include optional equipment.

# Smarter & Faster

ZAXIS uses advanced technology to reduce costs while working faster.

## Auto Acceleration System Helps Reduce Fuel Consumption

Engine speed is automatically controlled in response to lever operation. This helps reduce fuel consumption, especially during light-load work.

6% less fuel consumption than normal operation

## All Excavating Operations in a Single Mode

Simply select the "digging" mode for smooth and speedy front operations.



6% increase in production (in H/P mode) (compared to EX220-5)

### Excavating Power for Tough Job Sites

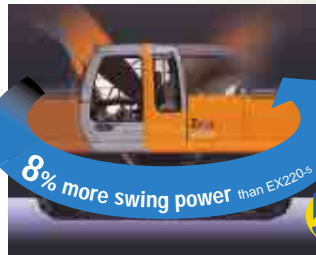
158 kN (16 100 kgf) EX220-5 at normal

170 kN (17 400 kgf)

167 kN (17 000 kgf) EX220-5 at power boost

180 kN (18 400 kgf)

### Travel and Swing Power You Can Depend on



8% more swing power than EX220-5

5% more travel power than EX220-5

### Auto Power Lift Increases Power on Demand

The auto power lift automatically boosts power by 6% when the load is increased during scooping-up operation.





**Easy-to-Monitor Instruments**

Strategically positioned instruments allow the operator to monitor the status of key areas with just a glance.

**Easy-to-Operation**

Switches and other essential controls are located near the operator. This helps keep operator movement to a minimum, enhancing control and helping to fight fatigue.

**Auto Control Air Conditioner (Option)**

Simply set the temperature and forget about it. Ducts are positioned to promote even air flow throughout the cab.



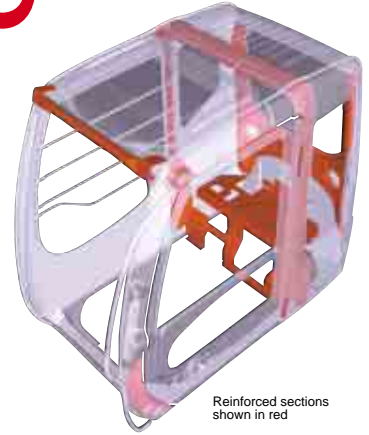
\* Illustration shows a sample of the air flow during bi-level control.



Z A X I S

**Protect & Serve**

A design that both guards the operator and contributes to efficient operation.



Reinforced sections shown in red

**CRES (Center pillar Reinforced Structure) Cab**

\* The CRES cab meets OPG top guard level 1 (ISO).

The cab is designed with "just in case" protection for the operator. The rigid cab design can help prevent injury to the operator during an accident.



Z A X I S

**Minimum Effort Maximum Efficiency**

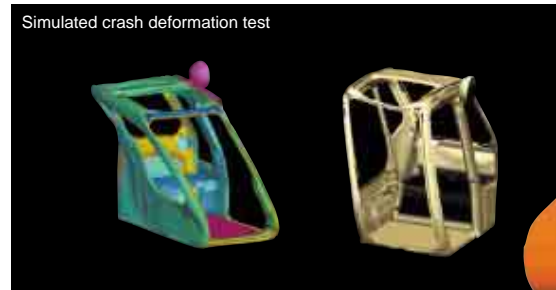
The operator's compartment is designed for both comfort and operating efficiency.



Enhanced visibility on the lower right side

Drink holder

- Storage box
- Easy-lock front window latch
- Wide and comfortable arm rests

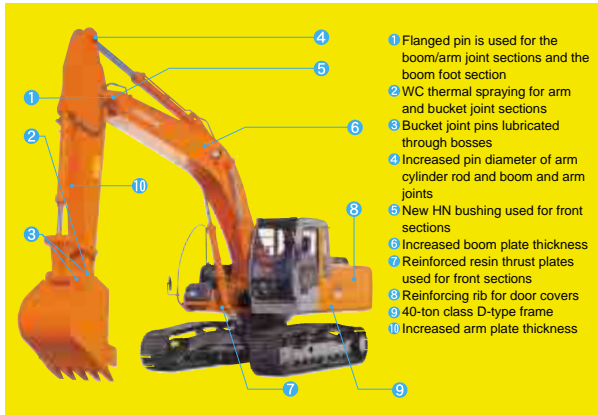


Simulated crash deformation test



# Functional & Durable

Extensive steps have been taken to support basic performance and overall durability.



- 1 Flanged pin is used for the boom/arm joint sections and the boom foot section
- 2 WC thermal spraying for arm and bucket joint sections
- 3 Bucket joint pins lubricated through bosses
- 4 Increased pin diameter of arm cylinder rod and boom and arm joints
- 5 New HN bushing used for front sections
- 6 Increased boom plate thickness
- 7 Reinforced resin thrust plates used for front sections
- 8 Reinforcing rib for door covers
- 9 40-ton class D-type frame
- 10 Increased arm plate thickness

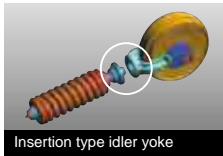


**New HN Bushing**



**WC (Tungsten Carbide) Thermal Spraying**

Used at arm end and bucket connection to increase wear resistance and reduce jerking.



Insertion type idler yoke

### Rigid Undercarriage

Strong undercarriage section for increased durability.



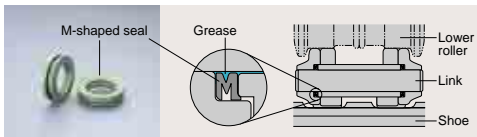
**Reinforced Resin Thrust Plates**

Designed to reduce noise and resist wear.



### Rugged Travel Device

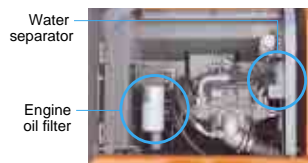
The compact travel device does not protrude from the crawler. It has been designed to provide high durability and help to reduce downtime.



**M-Shaped Track Link Seals Provide High Grease Retention**

### Front and Bucket Components Only Need Lubrication Every 500 Hours

The improved HN bushings and reinforced resin thrust plates help reduce maintenance time and expense. (See the Operators Manual)



**Engine Oil Filter and Water Separator Positioned for Easy Access from Ground**

### Hydraulic Oil Filter Only Needs Replacement Every 1000 Hours

The hydraulic oil filter can be used nearly twice as long as the previous model dramatically reducing maintenance time and expense.



**Undercarriage Designed for Easy Mud Removal**

## Equipment Operation Status Report

Onboard ICX (Information Controller)

PC

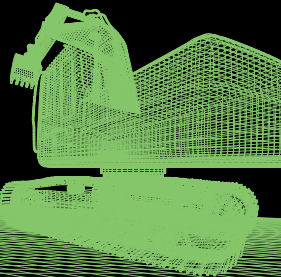
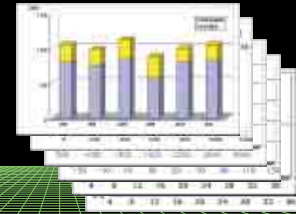


# Information Technology Support

Providing the data for making the right decisions.

### Information Services for Equipment

- Operation record
- Error record
- Alarm record
- Frequency distribution  
Radiator coolant /hydraulic temperature etc. and others.



# Environmentally Friendly Design

Helping ensure a cleaner tomorrow.



### Low-Noise Operation

A low-noise muffler and other such steps have been taken to reduce the amount of noise released from the engine compartment.



Low-noise muffler

Fan guide ring

N-type fan

### Emissions Control Engine

Conforms to U.S. EPA Tier 2 and EC stage II emission regulations.

### Lead-Free Wiring and Aluminium Radiator and Oil Cooler

Helps keep harmful materials out of the environment.



Labeled plastic parts

### Labeled Plastic Parts

The type of plastic used in various parts is imprinted on them to facilitate easy recycling.



# Smart Savings

Advanced technology helps reduce maintenance cost.







# ZAXIS230 SERIES

## STANDARD EQUIPMENT

Standard equipment may vary by country, so please consult your Hitachi dealer for details.

<b>ENGINE</b> <ul style="list-style-type: none"><li>• H/P mode control</li><li>• E mode control</li><li>• 50 A alternator</li><li>• Dry-type air filter with evacuator valve (with safety element)</li><li>• Cartridge-type engine oil filter</li><li>• Cartridge-type fuel filter</li><li>• Air cleaner double filters</li><li>• Radiator and oil cooler with dust protective net</li><li>• Radiator reserve tank</li><li>• Fan guard</li><li>• Isolation-mounted engine</li><li>• Auto-idle system</li><li>• Auto acceleration system</li></ul>	<ul style="list-style-type: none"><li>• Openable front windows-upper, and lower and left side windows</li><li>• Intermittent windshield retractable wipers</li><li>• Front window washer</li><li>• Adjustable reclining seat with adjustable armrests</li><li>• Footrest</li><li>• Electric double horn</li><li>• AM - FM radio with digital clock</li><li>• Auto-idle / acceleration selector</li><li>• Seat belt</li><li>• Drink holder</li><li>• Cigar lighter</li><li>• Ashtray</li><li>• Storage box</li><li>• Glove compartment</li><li>• Floor mat</li><li>• Heater</li><li>• Pilot control shut-off lever</li><li>• Engine stop knob</li></ul>	<b>UPPERSTRUCTURE</b> <ul style="list-style-type: none"><li>• Undercover</li><li>• 5 400 kg (11 900 lb) counterweight</li><li>• Fuel level float</li><li>• Hydraulic oil level gauge</li><li>• Tool box</li><li>• Utility space</li><li>• Rearview mirror (right &amp; left side)</li><li>• Swing parking brake</li></ul>	<b>ZAXIS240H / ZAXIS240LCH (Heavy-duty version)</b> <ul style="list-style-type: none"><li>• H-boom 6.00 m (19'8") and H-arm 2.96 m (9'8")</li><li>• Damage prevention plate and square bars</li><li>• 1.00 m<sup>3</sup> (1.30 yd<sup>3</sup> : SAE, PCSA heaped) H-bucket</li><li>• Reinforced link B</li><li>• Front glass lower guard</li><li>• 4.5 mm (0.18") thickness undercover</li><li>• 6 100 kg (13 500 lb) counterweight</li><li>• 600 mm (24") reinforced triple grouser shoe</li><li>• Reinforced track guard (2 units each side)</li><li>• Reinforced side steps (bolt mounted)</li><li>• Air cleaner double filters</li></ul>
<b>HYDRAULIC SYSTEM</b> <ul style="list-style-type: none"><li>• Work mode selector</li><li>• Engine speed sensing system</li><li>• E-P control system</li><li>• Power boost</li><li>• Auto power lift</li><li>• Quick warm-up system for pilot circuit</li><li>• Shockless valve in pilot circuit</li><li>• Boom-arm anti-drift valve</li><li>• Control valve with main relief valve</li><li>• Extra port for control valve</li><li>• Suction filter</li><li>• Full-flow filter</li><li>• Pilot filter</li></ul>	<b>MONITOR SYSTEM</b> <ul style="list-style-type: none"><li>• Meters: Hourmeter and trip-meter, engine coolant temperature gauge and fuel gauge.</li><li>• Warning lamps: Alternator charge, engine oil pressure, engine overheat, air filter restriction and minimum fuel level.</li><li>• Pilot lamps: Engine preheat, work light, auto-idle, auto-acceleration, digging mode and attachment mode</li><li>• Alarm buzzers: Engine oil pressure and engine overheat</li></ul>	<b>UNDERCARRIAGE</b> <ul style="list-style-type: none"><li>• Travel parking brake</li><li>• Travel motor covers</li><li>• Track guards and hydraulic track adjuster</li><li>• Bolt-on sprocket</li><li>• Upper rollers and lower rollers</li><li>• Reinforced track links with pin seals</li><li>• 600 mm (24") triple grouser shoes</li></ul>	<b>ZAXIS240K / ZAXIS240LCK (Demolition version)</b> <ul style="list-style-type: none"><li>• K-cab (CRES cab with overhead window and guard)</li><li>• K-boom 6.00 m (19'8") and K-arm 2.96 m (9'8")</li><li>• 1.00 m<sup>3</sup> (1.30 yd<sup>3</sup> : SAE, PCSA heaped) K-bucket</li><li>• Reinforced link B for demolition</li><li>• Reinforced bucket cylinder</li><li>• Front glass lower guard</li><li>• Attachment basic piping</li><li>• Damage prevention plate</li><li>• 6.0 mm (0.24") thickness undercover</li><li>• Track undercover</li><li>• Reinforced side step (bolt mounted)</li><li>• 600 mm (24") reinforced triple grouser shoe</li><li>• 6 500 kg (14 300 lb) counterweight</li><li>• High-performance full-flow filter (with restriction indicator)</li><li>• Air cleaner double filters</li></ul>
<b>CAB</b> <b>CRES (Center pillar Reinforced Structure) cab</b> <ul style="list-style-type: none"><li>• OPG top guard fitted level I (ISO) compliant cab.</li><li>• All-weather sound-suppressed steel cab</li><li>• Reinforced, tinted (bronze color) glass windows</li><li>• 4 fluid-filled elastic mounts</li></ul>	<b>LIGHTS</b> <ul style="list-style-type: none"><li>• 2 working lights</li></ul>	<b>FRONT ATTACHMENTS</b> <ul style="list-style-type: none"><li>• HN bushing</li><li>• WC thermal spraying</li><li>• Reinforced resin thrust plate</li><li>• Flanged pin</li><li>• Bucket clearance adjust mechanism</li><li>• Monolithically cast bucket link A</li><li>• Centralized lubrication system</li><li>• Dirt seal on all bucket pins</li><li>• 2.96 m (9'8") arm</li><li>• 1.00 m<sup>3</sup> (1.30 yd<sup>3</sup> : SAE, PCSA heaped) bucket</li></ul>	
		<b>MISCELLANEOUS</b> <ul style="list-style-type: none"><li>• Standard tool kit</li><li>• Lockable machine covers</li><li>• Lockable fuel filling cap</li><li>• Skid-resistant tapes, plates and handrails.</li><li>• Travel direction mark on track frame</li></ul>	

## OPTIONAL EQUIPMENT

Optional equipment may vary by country, so please consult your Hitachi dealer for details.

<ul style="list-style-type: none"><li>• Auto control air conditioner</li><li>• Suspension seat</li><li>• Hose rupture valves</li><li>• Electric fuel refilling pump</li><li>• Swing motion alarm device with lamps</li><li>• Travel motion alarm device</li><li>• Additional pump</li><li>• Auto-lubrication system</li><li>• KAB 515 suspension seat</li><li>• Transparent roof</li></ul>	<ul style="list-style-type: none"><li>• Pre-cleaner</li><li>• Fuel double filters</li><li>• Air cleaner double filters</li><li>• Tropical cover</li><li>• Large-capacity battery</li><li>• Attachment basic piping</li><li>• Accessories for breaker</li><li>• Accessories for breaker &amp; crusher</li><li>• Accessories for 2 speed selector</li></ul>	<ul style="list-style-type: none"><li>• Small swing radius bracket (ZAXIS240K/ZAXIS240LCK)</li><li>• 6 100 kg (13 500 lb) counterweight</li><li>• Front glass lower guard</li><li>• Front glass upper guard</li><li>• K-cab (CRES cab with overhead window and guard)</li><li>• 600 mm (24") reinforced triple grouser shoes</li><li>• Reinforced track guard (2 units each side)</li><li>• Full track guard</li><li>• Additional light (on the top of Cab)</li><li>• Rear light</li></ul>
--	---	--

Comparative information based on current Japan domestic model.  
These specifications are subject to change without notice.  
Illustrations and photos show the standard models, and may or may not include optional equipment, accessories, and all standard equipment with some differences in color and features.  
Before use, go through Operators Manual for proper operation.

## Hitachi Construction Machinery Co., Ltd.

Head Office: 5-1 Koraku 2-chome, Bunkyo-ku,  
Tokyo 112-8563, Japan

Telephone: (03)3830-8050

Facsimile: (03)3830-8202

KS-E380Q

03.03 (HD/HP, MT<sub>3</sub>)