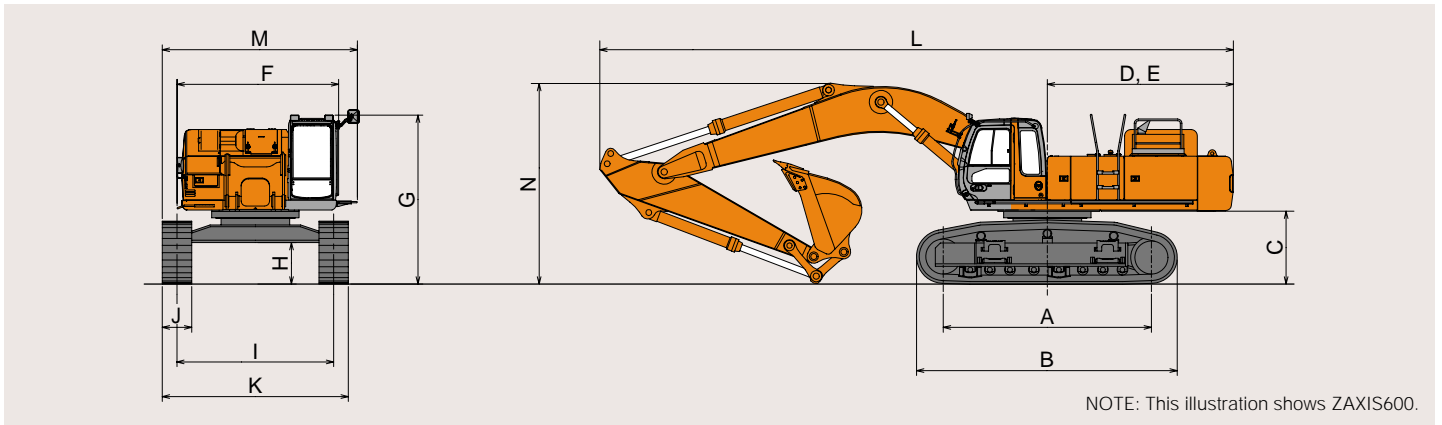


# SPECIFICATIONS

## DIMENSIONS



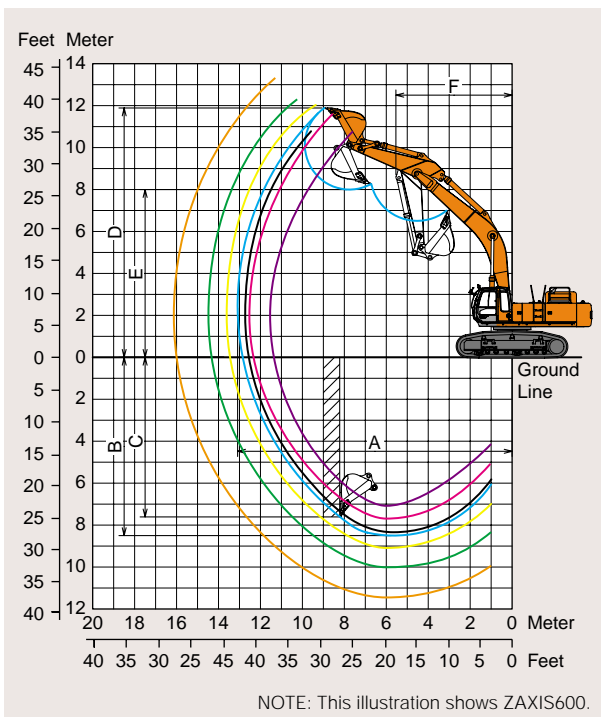
NOTE: This illustration shows ZAXIS600.

Unit: mm (ft in)

	ZAXIS600 / ZAXIS600LC		ZAXIS650H / ZAXIS650LCH	
A Distance between tumbler	4 250 (13'11")	4 600 (15'1")	4 250 (13'11")	4 600 (15'1")
B Undercarriage length	5 330 (17'6")	5 680 (18'8")	5 330 (17'6")	5 680 (18'8")
* C Counterweight clearance	1 450 (4'9")	1 450 (4'9")	1 450 (4'9")	1 450 (4'9")
D Rear-end swing radius	3 800 (12'6")	3 800 (12'6")	3 800 (12'6")	3 800 (12'6")
E Rear-end length	3 800 (12'6")	3 800 (12'6")	3 800 (12'6")	3 800 (12'6")
F Overall width of upperstructure	3 310 (10'10")	3 310 (10'10")	3 310 (10'10")	3 310 (10'10")
G Overall height of cab	3 500 (11'6")	3 500 (11'6")	3 500 (11'6")	3 500 (11'6")
* H Min. ground clearance	810 (2'8")	810 (2'8")	810 (2'8")	810 (2'8")
I Track gauge	3 200 (10'6")	3 200 (10'6")	3 200 (10'6")	3 200 (10'6")
J Track shoe width	600 (1'12")	600 (1'12")	600 (1'12")	600 (1'12")
K Undercarriage width	3 800 (12'6")	3 800 (12'6")	3 800 (12'6")	3 800 (12'6")
L Overall length	12 940 (42'5")	12 940 (42'5")	13 030 (42'9")	13 030 (42'9")
M Overall width	3 990 (13'1")	3 990 (13'1")	3 990 (13'1")	3 990 (13'1")
N Overall height of boom	4 250 (13'11")	4 250 (13'11")	4 270 (14'0")	4 270 (14'0")

\* Excluding track shoe lug.

## WORKING RANGES



NOTE: This illustration shows ZAXIS600.

Unit: mm (ft in)

	Boom	ZAXIS600 / ZAXIS600LC					ZAXIS650H / ZAXIS650LCH		
		6.6 m (21'8")	7.6 m (24'11")			9.2 m (30'2")	6.6 m (21'8")	7.6 m (24'11")	
			2.9 m (9'6")	2.9 m (9'6")	3.5 m (11'6")	4.1 m (13'5")	5.2 m (17'1")	5.2 m (17'1")	2.9 m (9'6")
* A Max. digging reach	kN	11 540 (23'3")	12 530 (25'11")	13 090 (27'11")	13 610 (29'10")	14 480 (30'2")	16 130 (33'7")	11 540 (23'3")	12 600 (27'4")
	kgf	11 540 (23'3")	12 530 (25'11")	13 090 (27'11")	13 610 (29'10")	14 480 (30'2")	16 130 (33'7")	11 540 (23'3")	12 600 (27'4")
* B Max. digging depth	kN	7 080 (23'3")	7 890 (25'11")	8 500 (27'11")	9 090 (29'10")	10 010 (32'10")	11 450 (37'7")	7 080 (23'3")	8 340 (27'4")
	kgf	7 080 (23'3")	7 890 (25'11")	8 500 (27'11")	9 090 (29'10")	10 010 (32'10")	11 450 (37'7")	7 080 (23'3")	8 340 (27'4")
* C Max. vertical wall	kN	5 140 (16'10")	6 760 (22'2")	7 610 (25'0")	8 130 (26'8")	8 870 (29'1")	10 230 (33'7")	5 140 (16'10")	5 410 (17'9")
	kgf	5 140 (16'10")	6 760 (22'2")	7 610 (25'0")	8 130 (26'8")	8 870 (29'1")	10 230 (33'7")	5 140 (16'10")	5 410 (17'9")
* D Max. cutting height	kN	10 770 (35'4")	11 610 (38'1")	11 880 (39'0")	12 030 (39'6")	12 300 (40'4")	13 320 (43'8")	10 770 (35'4")	10 690 (35'1")
	kgf	10 770 (35'4")	11 610 (38'1")	11 880 (39'0")	12 030 (39'6")	12 300 (40'4")	13 320 (43'8")	10 770 (35'4")	10 690 (35'1")
* E Max. dumping height	kN	6 980 (22'11")	7 770 (25'6")	8 000 (26'3")	8 150 (26'9")	8 830 (29'0")	9 860 (32'4")	6 980 (22'11")	7 290 (23'11")
	kgf	6 980 (22'11")	7 770 (25'6")	8 000 (26'3")	8 150 (26'9")	8 830 (29'0")	9 860 (32'4")	6 980 (22'11")	7 290 (23'11")
F Min. swing radius	kN	4 930 (16'2")	5 670 (18'7")	5 540 (18'2")	5 500 (18'1")	5 500 (18'1")	6 760 (22'2")	4 930 (16'2")	5 550 (18'3")
	kgf	4 930 (16'2")	5 670 (18'7")	5 540 (18'2")	5 500 (18'1")	5 500 (18'1")	6 760 (22'2")	4 930 (16'2")	5 550 (18'3")
Digging force	Bucket	kN 308(31 400, 69 230)	kN 275(28 100, 61 950)	kN 276(28 200, 62 170)	kN 275(28 100, 61 950)	kN 250(25 500, 56 220)	kN 250(25 500, 56 220)	kN 308(31 400, 69 230)	kN 292(29 800, 65 700)
	Arm	kN 258(26 300, 57 980)	kN 262(26 700, 58 860)	kN 212(21 600, 47 620)	kN 191(19 500, 42 990)	kN 170(17 300, 38 140)	kN 170(17 300, 38 140)	kN 258(26 300, 57 980)	kN 238(24 300, 53 570)
(Power Boost)	Bucket	kN 322(32 900, 72 530)	kN 289(29 500, 65 040)	kN 290(29 600, 65 250)	kN 289(29 500, 65 040)	kN 262(26 700, 58 860)	kN 262(26 700, 58 860)	kN 322(32 900, 72 530)	kN 306(31 200, 68 780)
	Arm	kN 270(27 600, 60 850)	kN 274(28 000, 61 730)	kN 222(22 700, 50 040)	kN 200(20 400, 44 970)	kN 177(18 100, 39 900)	kN 177(18 100, 39 900)	kN 270(27 600, 60 850)	kN 250(25 500, 56 220)

\* Excluding track shoe lug

## ENGINE

Model	Isuzu BB-6WG1X
Type	4-cycle water-cooled, direct injection
Aspiration	Turbocharged
No. of cylinders	6
Rated power	
DIN 6271, net	295 kW (400 PS) at 1 800 min <sup>-1</sup> (rpm)
SAE J1349, net	295 kW (395 HP) at 1 800 min <sup>-1</sup> (rpm)
Maximum torque	1 540 N·m (157 kgf·m, 1 140 lbf·ft) at 1 500 min <sup>-1</sup> (rpm)
Piston Displacement	15.681 L (957 in <sup>3</sup> )
Bore and stroke	147 mm x 154 mm (5.7" x 6.1")
Batteries	2 x 12 V, 170 AH
Governor	Mechanical speed control by stepping motor

## HYDRAULIC SYSTEM

- Work mode selector
  - General purpose mode / Trench digging mode
  - Attachment mode
  - Precision mode
- Engine speed sensing system

Main pumps	2 variable displacement axial piston pumps
Maximum oil flow	2 x 434 L/min (115 US gpm, 95 Imp gpm)
Pilot pump	1 gear pump
Maximum oil flow	30 L/min (7.9 US gpm, 6.6 Imp gpm)

## Hydraulic Motors

Travel	2 axial piston motors with parking brake
Swing	2 axial piston motors

## Relief Valve Settings

Implement circuit	30.9 MPa (315 kgf/cm <sup>2</sup> , 4 480 psi)
Swing circuit	29.4 MPa (300 kgf/cm <sup>2</sup> , 4 270 psi)
Travel circuit	34.3 MPa (350 kgf/cm <sup>2</sup> , 4 980 psi)
Pilot circuit	3.9 MPa (40 kgf/cm <sup>2</sup> , 570 psi)

## Hydraulic Cylinders

High-strength piston rods and tubes. Cylinder cushion mechanisms provided in boom and arm cylinders to absorb shock at stroke ends.

## Dimensions

	Qty.	Bore	Rod diameter
Boom	2	180 mm (7.09")	125 mm (4.92")
Arm	1	200 mm (7.87")	140 mm (5.51")
Bucket	1	180 mm (7.09")	130 mm (5.12")

## Hydraulic Filters

Hydraulic circuits use high-quality hydraulic filters. A suction filter is incorporated in the suction line, and full-flow filters in the return line and swing/ travel motor drain lines.

## CONTROLS

Pilot controls. Hitachi's original shockless valve and quick warm-up system built in the pilot circuit. Hydraulic warm-up control system for hydraulic oil.

Implement levers	2
Travel levers with pedals	2

## UPPERSTRUCTURE

### Revolving Frame

Welded, sturdy box construction, using heavy-gauge steel plates for ruggedness. D-section frame for resistance to deformation.

### Swing Mechanism

Axial piston motor with planetary gear is bathed in oil. Swing circle is single-row, shear type ball bearing with induction-hardened internal gear. Internal gear and pinion gear are immersed in lubricant. Swing parking brake is spring-set/hydraulic-released disc type. Swing cushion valve built in swing motor absorbs shocks when stopping swing.

Swing speed ..... 7.0 min<sup>-1</sup> (rpm)

### Operator's Cab

Independent, spacious cab, 1 005 mm (40") wide by 1 675 mm (66") high, conforming to ISO\* Standards. Reinforced glass windows on 4 sides for visibility. Openable front windows (upper and lower). Adjustable, reclining seat with armrests: movable with or without control levers and monitor panel.

\* International Standard Organisation

### ZAXIS650H/ZAXIS650LCH's Cab:

1 005 mm (40") wide, 1 820 mm (72") high

## UNDERCARRIAGE

### Tracks

Tractor-type undercarriage. Welded track frame, using carefully selected materials for tough jobs. Side frame bolted to track frame. Lubricated track rollers, idlers, and sprockets with floating seals. Track shoes with triple grouser made of induction-hardened rolled alloy. Heat-treated connecting pins with dirt seals. Hydraulic (grease) track adjusters with shock-absorbing recoil springs.

### Numbers of Rollers and Shoes on Each Side

Upper rollers	3
Lower rollers	8 : ZAXIS600 / ZAXIS650H 9 : ZAXIS600LC / ZAXIS650LCH
Track shoes	48 : ZAXIS600 / ZAXIS650H 51 : ZAXIS600LC / ZAXIS650LCH
Track guard	2 : ZAXIS600 / ZAXIS650H / ZAXIS650LCH 3 : ZAXIS600LC
H-track center guard (dual type)	1 : ZAXIS650H / ZAXIS650LCH

### Traction Device

Each track driven by axial piston motor through reduction gears for counter-rotation of the tracks. Sprockets are replaceable. Parking brake is spring-set/hydraulic-released disc type. Travel shockless relief valve built in travel motor absorbs shocks when stopping travel, ensuring smooth stops.

Travel speeds	High: 0 to 5.0 km/h (3.1 mph) Low: 0 to 3.5 km/h (2.2 mph)
Maximum traction force	415 kN (42 300 kgf, 93 300 lbf)
Gradeability	35° (70%) continuous

## WEIGHTS AND GROUND PRESSURE

### ZAXIS600:

Equipped with 7.6 m (24'11") boom, 3.5 m (11'6") arm, and 2.7 m<sup>3</sup> (3.5 yd<sup>3</sup>; SAE, PCSA heaped) bucket.

### ZAXIS600LC:

Equipped with 7.6 m (24'11") boom, 3.5 m (11'6") arm, and 2.9 m<sup>3</sup> (3.8 yd<sup>3</sup>; SAE, PCSA heaped) bucket.

Shoe type	Shoe width	Operating weight	Ground pressure
Triple grouser	600 mm (24")	56 000 kg (123 460 lb)	99 kPa (1.01 kgf/cm <sup>2</sup> , 14.1 psi)
		57 000 kg (125 660 lb)	94 kPa (0.95 kgf/cm <sup>2</sup> , 13.1 psi)
	750 mm (30")	56 800 kg (125 220 lb)	80 kPa (0.82 kgf/cm <sup>2</sup> , 11.7 psi)
		57 900 kg (12 7650 lb)	76 kPa (0.78 kgf/cm <sup>2</sup> , 11.1 psi)
	900 mm (35")	57 600 kg (126 980 lb)	68 kPa (0.69 kgf/cm <sup>2</sup> , 9.8 psi)
		58 600 kg (129 190 lb)	64 kPa (0.65 kgf/cm <sup>2</sup> , 9.2 psi)

Figures in [ ] are data on the ZAXIS600LC.

### ZAXIS650H / ZAXIS650LCH

Equipped with 7.6 m (24'11") H-boom, 3.4 m (11'2") H-arm, and 2.79 m<sup>3</sup> (3.23 yd<sup>3</sup>; SAE, PCSA heaped) rock bucket.

Shoe type	Shoe width	Operating weight	Ground pressure
Double grouser	600 mm (24")	57 600 kg (126 980 lb)	102 kPa (1.04 kgf/cm <sup>2</sup> , 14.8 psi)
		57 600 kg (126 980 lb)	102 kPa (1.04 kgf/cm <sup>2</sup> , 14.8 psi)
Triple grouser	600 mm (24")	58 400 kg (128 750 lb)	96 kPa (0.98 kgf/cm <sup>2</sup> , 13.9 psi)

Figures in [ ] are data on the ZAXIS650LCH.

## Buckets

Capacity		Width		No. of teeth	Weight	Recommendation							
						ZAXIS650H / ZAXIS650LCH		ZAXIS600 / ZAXIS600LC					
						6.6 m (21'8")	7.6 m (24'11")	6.6 m (21'8")	7.6 m (24'11")			8.2 m (30'2")	
2.9 m (9'6")	3.4 m (11'2")	2.9 m (9'6")	2.9 m (9'6")	3.5 m (11'6")	4.1 m (13'5")	5.2 m (17'1")	5.2 m (17'1")						
1.5 m <sup>3</sup> (1.96 yd <sup>3</sup> )	1.3 m <sup>3</sup>	1 180 mm (46")	1 320 mm (52")	4	1 540 kg (3 400 lb)	X / X	X / X	X / X	X / X	X / X	X / X	○ / ○	- / -
2.0 m <sup>3</sup> (2.62 yd <sup>3</sup> )	1.8 m <sup>3</sup>	1 490 mm (59")	1 630 mm (64")	5	1 780 kg (3 920 lb)	X / X	X / X	X / X	X / X	X / X	X / X	○ / ○	- / -
2.3 m <sup>3</sup> (3.01 yd <sup>3</sup> )	2.0 m <sup>3</sup>	1 420 mm (56")	1 560 mm (61")	5	1 990 kg (4 390 lb)	X / X	○ / ○	X / X	○ / ○	○ / ○	○ / ○	X / X	- / X
2.5 m <sup>3</sup> (3.27 yd <sup>3</sup> )	2.2 m <sup>3</sup>	1 530 mm (60")	1 670 mm (66")	5	2 070 kg (4 560 lb)	X / X	○ / ○	X / X	○ / ○	○ / ○	○ / ○	X / X	- / X
2.7 m <sup>3</sup> (3.53 yd <sup>3</sup> )	2.4 m <sup>3</sup>	1 640 mm (65")	1 780 mm (70")	5	2 130 kg (4 700 lb)	X / X	○ / ○	X / X	○ / ○	○ / ○	○ / ○	X / X	- / X
2.9 m <sup>3</sup> (3.79 yd <sup>3</sup> )	2.5 m <sup>3</sup>	1 730 mm (68")	1 870 mm (74")	5	2 240 kg (4 940 lb)	X / X	○ / ○	X / X	○ / ○	○ / ○	○ / ○	X / X	- / X
3.5 m <sup>3</sup> (4.58 yd <sup>3</sup> )	3.1 m <sup>3</sup>	1 850 mm (73")	1 990 mm (78")	5	2 710 kg (5 970 lb)	○ / ○	X / X	○ / ○	X / X	X / X	X / X	X / X	- / X
*1 2.8 m <sup>3</sup> (3.66 yd <sup>3</sup> )	2.5 m <sup>3</sup>	—	1 670 mm (66")	5	2 710 kg (5 970 lb)	X / X	● / ●	X / X	- / -	- / -	- / -	X / X	- / X
*1 3.3 m <sup>3</sup> (4.32 yd <sup>3</sup> )	3.0 m <sup>3</sup>	—	1 750 mm (69")	5	2 980 kg (6 570 lb)	● / ●	X / X	- / -	X / X	X / X	X / X	X / X	- / X
*2 1.5 m <sup>3</sup> (1.96 yd <sup>3</sup> )	1.3 m <sup>3</sup>	—	1 310 mm (52")	3	3 050 kg (6 720 lb)	X / X	● / ●	X / X	- / -	- / -	- / -	X / X	- / X
*2 1.8 m <sup>3</sup> (2.35 yd <sup>3</sup> )	1.6 m <sup>3</sup>	—	1 570 mm (62")	3	3 660 kg (8 070 lb)	● / ●	X / X	- / -	X / X	X / X	X / X	X / X	- / X
One point ripper				1	1 670 kg (3 680 lb)	● / ●	● / ●	- / -	X / X	X / X	X / X	X / X	- / X

\*1 Rock bucket

\*2 Ripper bucket

### ZAXIS600 / ZAXIS600LC with BE-front

Equipped with 6.6 m (21'8") BE-boom, 2.9 m (9'6") BE-arm, and 3.3 m<sup>3</sup> (4.3 yd<sup>3</sup>; SAE, PCSA heaped) rock bucket.

Shoe type	Shoe width	Operating weight	Ground pressure
Triple grouser	600 mm (24")	56 700 kg (125 000 lb)	100 kPa (1.02 kgf/cm <sup>2</sup> , 14.5 psi)
		57 700 kg (127 200 lb)	95 kPa (0.97 kgf/cm <sup>2</sup> , 13.8 psi)
	750 mm (30")	57 600 kg (127 000 lb)	81 kPa (0.83 kgf/cm <sup>2</sup> , 11.8 psi)
		58 500 kg (129 000 lb)	77 kPa (0.79 kgf/cm <sup>2</sup> , 11.2 psi)
	900 mm (35")	58 400 kg (128 800 lb)	69 kPa (0.70 kgf/cm <sup>2</sup> , 9.95 psi)
		59 300 kg (130 700 lb)	65 kPa (0.66 kgf/cm <sup>2</sup> , 9.38 psi)

Figures in [ ] are data on the ZAXIS600LC.

## SERVICE REFILL CAPACITIES

	liters	US gal	Imp gal
Fuel tank	740.0	195.5	162.8
Engine coolant	98.0	25.9	21.6
Engine oil	55.0	14.5	12.1
Pump drive	7.0	1.8	1.5
Swing mechanism (each side)	10.5	2.8	2.3
Travel final device (each side)	14.0	3.7	3.1
Hydraulic system	618.0	163.3	136.0
Hydraulic tank	310.0	81.9	68.2

## BACKHOE ATTACHMENTS

Boom and arms of all-welded, box-section design. Bucket is all-welded, high-strength steel structure. Side clearance adjust mechanism provided on the bucket joint bracket.

○ Suitable for materials with density of 1 800 kg/m<sup>3</sup> (3 030 lb/yd<sup>3</sup>) or less

○ Suitable for materials with density of 1 600 kg/m<sup>3</sup> (2 700 lb/yd<sup>3</sup>) or less

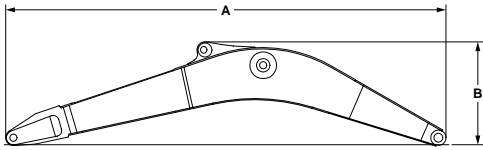
● Heavy-duty service

- Not applicable

X Can't installed

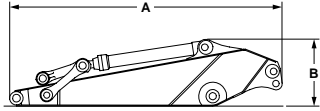






### Boom

	A	B	Overall width	Weight
6.6 m (21'8") BE-boom	6 880 mm (22'7")	2 320 mm (7'7")	1 180 mm (3'10")	5 250 kg (11 600 lb)
7.6 m (24'11")	7 880 mm (25'10")	2 020 mm (6'8")	1 180 mm (3'10")	5 250 kg (11 600 lb)
7.6 m (24'11") H-boom	7 880 mm (25'10")	2 020 mm (6'8")	1 180 mm (3'10")	5 600 kg (12 300 lb)
9.2 m (30'2")	9 480 mm (31'1")	2 070 mm (6'9")	1 180 mm (3'10")	6 240 kg (13 800 lb)



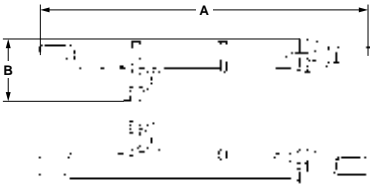
### Arm

	A	B	Overall width	Weight
2.9 m (9'6") BE-arm	4 290 mm (14'1")	1 440 mm (4'9")	790 mm (2'7")	3 230 kg (7 120 lb)
2.9 m (9'6")	4 290 mm (14'1")	1 440 mm (4'9")	790 mm (2'7")	3 180 kg (7 010 lb)
3.5 m (11'6")	4 880 mm (16'0")	1 200 mm (3'11")	790 mm (2'7")	3 010 kg (6 640 lb)
4.1 m (13'5")	5 450 mm (17'11")	1 200 mm (3'11")	790 mm (2'7")	3 220 kg (7 100 lb)
5.2 m (17'1")	6 540 mm (21'5")	1 140 mm (3'9")	790 mm (2'7")	3 110 kg (6 860 lb)
3.5 m (11'6") H-arm	4 900 mm (16'1")	1 210 mm (4'0")	790 mm (2'7")	3 210 kg (7 080 lb)

### Bucket

Capacity		A	B	Overall width	Weight
SAE, PCSA heaped	CECE heaped				
1.5 m <sup>3</sup> (1.96 yd <sup>3</sup> )	1.2 m <sup>3</sup>	2 010 mm (6'7")	1 570 mm (5'2")	1 280 mm (4'2")	1 580 kg (3 480 lb)
1.8 m <sup>3</sup> (2.35 yd <sup>3</sup> )	1.6 m <sup>3</sup>	2 010 mm (6'7")	1 570 mm (5'2")	1 500 mm (5'9")	1 700 kg (3 750 lb)
2.3 m <sup>3</sup> (3.01 yd <sup>3</sup> )	2.0 m <sup>3</sup>	2 140 mm (7'0")	1 750 mm (5'9")	1 560 mm (6'1")	1 990 kg (4 390 lb)
2.5 m <sup>3</sup> (3.27 yd <sup>3</sup> )	2.2 m <sup>3</sup>	2 140 mm (7'0")	1 750 mm (5'9")	1 670 mm (6'6")	2 070 kg (4 560 lb)
2.7 m <sup>3</sup> (3.53 yd <sup>3</sup> )	2.3 m <sup>3</sup>	2 140 mm (7'0")	1 750 mm (5'9")	1 780 mm (5'10")	2 130 kg (4 700 lb)
2.9 m <sup>3</sup> (3.79 yd <sup>3</sup> )	2.4 m <sup>3</sup>	2 140 mm (7'0")	1 750 mm (5'9")	1 870 mm (6'2")	2 240 kg (4 940 lb)
3.5 m <sup>3</sup> (4.58 yd <sup>3</sup> )	3.0 m <sup>3</sup>	2 160 mm (7'1")	1 840 mm (6'0")	1 990 mm (6'6")	2 740 kg (6 040 lb)
*2.8 m <sup>3</sup> (3.66 yd <sup>3</sup> )	2.2 m <sup>3</sup>	2 170 mm (7'1")	1 750 mm (5'9")	1 670 mm (6'6")	2 710 kg (5 970 lb)
*3.3 m <sup>3</sup> (4.32 yd <sup>3</sup> )	2.7 m <sup>3</sup>	2 240 mm (7'4")	1 900 mm (6'3")	1 750 mm (5'9")	2 970 kg (6 550 lb)

\* Rock bucket



### Boom cylinders

520 kg (1 150 lb) × 2

A	B	Overall height
2 660 mm (8'9")	520 mm (1'8")	360 mm (1'2")

### Hose of boom cylinders

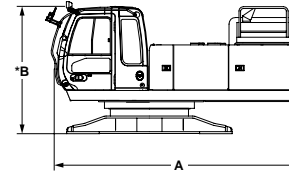
6 kg (7 lb) × 4

A	B
1 120 mm (3'8")	41 mm (1.6")



### Left sidewalk

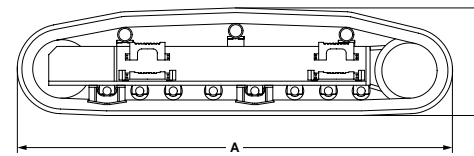
	A	B	Overall width	Weight
Front	1 920 mm (6'4")	430 mm (1'5")	130 mm (5.1")	40 kg (88 lb)
Reverse	2 410 mm (7'11")	340 mm (1'1")	130 mm (5.1")	40 kg (88 lb)



### Upperstructure

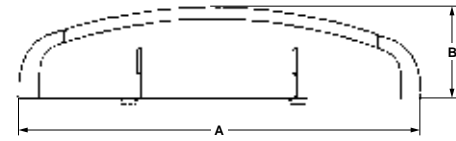
	A	B	Overall width	Weight
ZAXIS600	4 950 mm (16'3")	2 600 mm (8'6")	3 290 mm (10'10")	18 300 kg (41 000 lb)
ZAXIS600LC	4 950 mm (16'3")	2 600 mm (8'6")	3 290 mm (10'10")	18 300 kg (41 000 lb)
*ZAXIS650H	5 000 mm (16'5")	2 650 mm (8'8")	3 290 mm (10'10")	18 600 kg (40 300 lb)
*ZAXIS650LCH	5 000 mm (16'5")	2 650 mm (8'8")	3 290 mm (10'10")	18 600 kg (40 300 lb)

\* With Headguard-integrated cab.



### Side frame

	Shoe width	A	B	Overall width	Weight
ZAXIS600	600 mm (24")	5 330 mm (17'6")	1 310 mm (4'4")	720 mm (2'4")	7 700 kg (17 000 lb)
	750 mm (30")	5 330 mm (17'6")	1 310 mm (4'4")	790 mm (2'7")	8 100 kg (17 900 lb)
ZAXIS600LC	600 mm (24")	5 680 mm (18'8")	1 310 mm (4'4")	720 mm (2'4")	8 200 kg (18 100 lb)
	750 mm (30")	5 680 mm (18'8")	1 310 mm (4'4")	790 mm (2'7")	8 600 kg (19 000 lb)
ZAXIS650H	600 mm (24")	5 330 mm (17'6")	1 310 mm (4'4")	720 mm (2'4")	7 900 kg (17 400 lb)
	750 mm (30")	5 330 mm (17'6")	1 310 mm (4'4")	790 mm (2'7")	8 300 kg (18 300 lb)



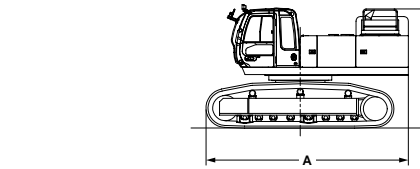
### Counterweight

A	B	Overall height	Weight
3 210 mm (00'00")	790 mm (2'7")	1 250 mm (4'1")	10 500 kg (23 200 lb)

### Basic machine (without counterweight)

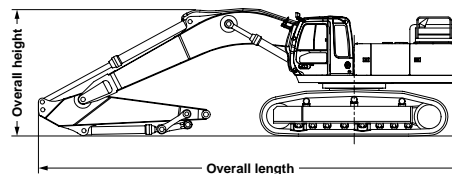
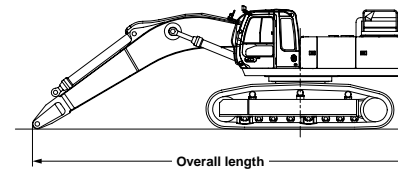
	Shoe width	A	B	Overall width	Weight
ZAXIS600	600 mm (24")	5 730 mm (18'10")	3 450 mm (11'4")	3 300 mm (10'10")	33 800 kg (74 500 lb)
	750 mm (30")	5 730 mm (18'10")	3 450 mm (11'4")	3 450 mm (11'4")	34 600 kg (76 300 lb)
ZAXIS600LC	600 mm (24")	5 900 mm (19'4")	3 450 mm (11'4")	3 300 mm (10'10")	34 700 kg (76 500 lb)
	750 mm (30")	5 900 mm (19'4")	3 450 mm (11'4")	3 450 mm (11'4")	35 500 kg (78 300 lb)
*ZAXIS650H	600 mm (24")	5 730 mm (18'10")	3 500 mm (11'6")	3 300 mm (10'10")	34 300 kg (75 600 lb)
*ZAXIS650LCH	600 mm (24")	5 900 mm (19'4")	3 500 mm (11'6")	3 300 mm (10'10")	35 100 kg (77 400 lb)

\* Overall height of Headguard-integrated cab.



### Basic machine (with boom)

	Boom length	Overall length
ZAXIS600, ZAXIS600LC	7.6 m (24'11")	10 650 mm (34'11")
ZAXIS650H, ZAXIS650LCH	7.6 m (24'11") H-boom	10 650 mm (34'11")
ZAXIS600	6.6 m (21'8") BE-boom	9 600 mm (31'6")
ZAXIS600LC	6.6 m (21'8") BE-boom	9 600 mm (31'6")



### Basic machine (with boom and arm)

	Front	Overall height	Overall length
ZAXIS600	7.6 m (24'11") boom & 3.5 m (11'6") arm	3 600 mm (11'10")	12 000 mm (39'4")
ZAXIS600LC	7.6 m (24'11") boom & 3.5 m (11'6") arm	3 620 mm (11'11")	12 000 mm (39'4")

# ZAXIS600 SERIES

## STANDARD EQUIPMENT

Standard equipment may vary by country, so please consult your Hitachi dealer for details.

### ENGINE

- H/P mode control
- E mode control
- 50 A alternator
- Dry-type air double filters with evacuator valve (with air cleaner restriction switch for monitor)
- Cartridge-type engine oil filter
- Cartridge-type fuel filter
- Radiator and oil cooler with dust protective net
- Radiator reserve tank
- Fan guard
- Isolation-mounted engine
- Auto-idle system
- Auto acceleration system
- Tinted grass windows
- 6 fluid-filled elastic mounts
- Openable windows; upper, and lower front, and left side windows
- Intermittent windshield retractable wipers
- Front window washer
- Adjustable reclining suspension seat with adjustable armrests
- Footrest
- Electric double horn
- AM - FM radio with digital clock
- Auto-idle / acceleration selector
- Seat belt
- Drink holder
- Cigar lighter
- Ashtray
- Storage box
- Glove compartment
- Floor mat
- Pilot control shut-off lever
- Engine stop knob
- Auto control air conditioner

### HYDRAULIC SYSTEM

- Work mode selector
- Engine speed sensing system
- E-P control system
- Power boost
- Boom mode selector system
- Quick warm-up system for pilot circuit
- Shockless valve in pilot circuit
- Control valve with main relief valve
- Extra port for control valve
- Suction filter
- Full-flow filter
- Pilot filter

### CAB

#### CRES (Center pillar Reinforced Structure) cab

- OPG top guard fitted level I (ISO) compliant cab
- All-weather sound-suppressed steel cab

Engine oil pressure and engine overheat

### LIGHTS

- 2 working lights

### UPPERSTRUCTURE

- Undercover
- 10 500 kg (23 100 lb) counterweight
- Fuel level float
- Hydraulic oil level gauge
- Tool box
- Rearview mirror (right & left side)
- Swing parking brake

### UNDERCARRIAGE

- Travel parking brake
- Travel motor covers
- Track guards and hydraulic track adjuster
- Idler track guard
- Bolt-on sprocket
- Upper rollers and lower rollers
- Reinforced track links with pin seals
- 600 mm (24") triple grouser shoes

### FRONT ATTACHMENTS

- Flanged pin
- Bucket clearance adjust mechanism
- Monolithically cast bucket link A
- Centralized lubrication system
- Dust seal on all bucket pins
- 7.6 m (24'11") boom
- 3.5 m (11'2") arm
- 2.7 m<sup>3</sup> (3.5 yd<sup>3</sup> : SAE, PCSA heaped) bucket : ZAXIS600
- 2.9 m<sup>3</sup> (3.8 yd<sup>3</sup> : SAE, PCSA heaped) bucket : ZAXIS600LC

### MISCELLANEOUS

- Standard tool kit
- Lockable machine covers
- Lockable fuel filling cap
- Skid-resistant tapes, plates, handrails and sidewalk
- Travel direction mark on track frame
- Onboard ICX

### ZAXIS650H / ZAXIS650LCH (Heavy-duty version)

- 7.6 m (24'11") H-boom and 3.4 m (11'2") H-arm
- Damage preventive plate and square bars
- 2.8 m<sup>3</sup> (3.7 yd<sup>3</sup> : SAE, PCSA heaped) rock bucket (with dual type side shrouds)
- Headguard integrated cab with 2 cab lights
- 4.5 mm (0.18") thickness undercover
- H-track guard (dual type)
- Reinforced side steps (bolt mounted)

### MONITOR SYSTEM

- Meters:
  - Hourmeter and trip-meter, engine coolant temperature gauge and fuel gauge
- Warning lamps:
  - Alternator charge, engine oil pressure, engine overheat, air filter restriction and minimum fuel level
- Pilot lamps:
  - Engine preheat, engine oil level, engine coolant level, auto-idle, auto-acceleration, digging mode, trench digging mode, attachment mode and precision (or heavy lift) mode
- Alarm buzzers:

## OPTIONAL EQUIPMENT

Optional equipment may vary by country, so please consult your Hitachi dealer for details.

- Hose rupture valves
- Electric fuel refilling pump
- Swing motion alarm device with lamps
- OPG top and front guard fitted level II (ISO) compliant cab
- Travel motion alarm device
- 2 cab lights (only CRES cab)
- Auto-grease lubricator
- Electric grease gun
- Ladder
- Attachment basic piping
- Accessories for breaker
- Right sidewalk
- Accessories for breaker & crusher
- Accessories for 2 speed selector
- Front glass lower guard
- Front glass upper guard
- Full track guard
- Counterweight removal device
- Double grouser Shoe
- 750 mm (30") triple grouser shoe
- 900 mm (35") triple grouser shoe

Comparative information based on current Japan domestic model.  
These specifications are subject to change without notice.  
Illustrations and photos show the standard models, and may or may not include optional equipment, accessories, and all standard equipment with some differences in color and features.  
Before use, go through Operators Manual for proper operation.