

ZAXIS-3 series

HITACHI

# ZAXIS 850LC-3

image to come

## HYDRAULIC EXCAVATOR

- **Model Code:** ZX850LC-3
- **Engine Rated Power:** 532 SAE net hp (397 kW) @ 1,800 rpm
- **Operating Weight:** 185,120 lb. (84 152 kg)
- **Backhoe Bucket:** 4.57 cu. yd. (3.49 m<sup>3</sup>), 54-in. (1372 mm)

# ZAXIS 850LC-3

## Engine

Type .....	Isuzu AH-6WG1XYSA-03 with turbocharger and air-to-air charge air cooler; meets EPA and CARB emission non-road regulations
Rated Power .....	532 SAE net hp (397 kW) @ 1,800 rpm
Displacement .....	957 cu. in. (15.681 L)
Electrical System .....	24 volt with 50-amp alternator
Off-Level Capacity .....	70% (35 deg.)

## Performance

Main Pumps .....	two variable-displacement axial-piston
Maximum Flow .....	2 x 139 gpm (2 x 528 L/min.)
Swing Speed .....	0-9 rpm
Swing Torque .....	182,223 lb.-ft. (247 250 Nm)
<i>Travel Speed</i>	
Low .....	0-2.0 mph (0-3.4 km/h)
High .....	0-3.4 mph (0-5.5 km/h)
Drawbar Pull .....	126,194 lb. (57 240 kg)
Arm Force* .....	61,370 lb. (273 kN)
Bucket Digging Force* .....	80,703 lb. (359 kN)
*Digging force and lift capacity with power boost.	

## Capacities

Fuel Tank .....	296 gal. (1120 L)
Cooling System .....	123 qt. (116 L)
Engine Lubrication, Including Filter .....	60.2 qt. (57 L)
Hydraulic Tank .....	209 gal. (790 L)

## Operating Weight

With full fuel tank; 175-lb. (79 kg) operator; 4.57-cu.-yd. (3.49 m<sup>3</sup>), 54-in. (1372 mm), 7,491-lb. (3398 kg) bucket; 14-ft. 5-in. (4.4 m) arm; 29,321-lb. (13 300 kg) counterweight; and 36-in. (900 mm) triple semi-grouser shoes ..... 185,520 lb. (84 152 kg)

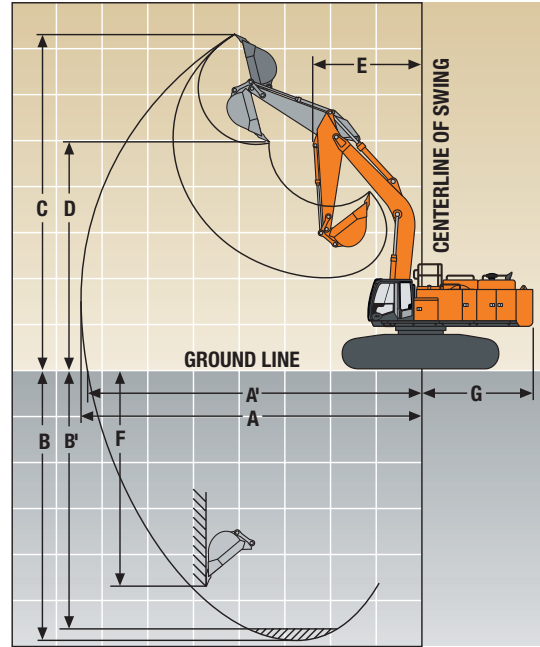
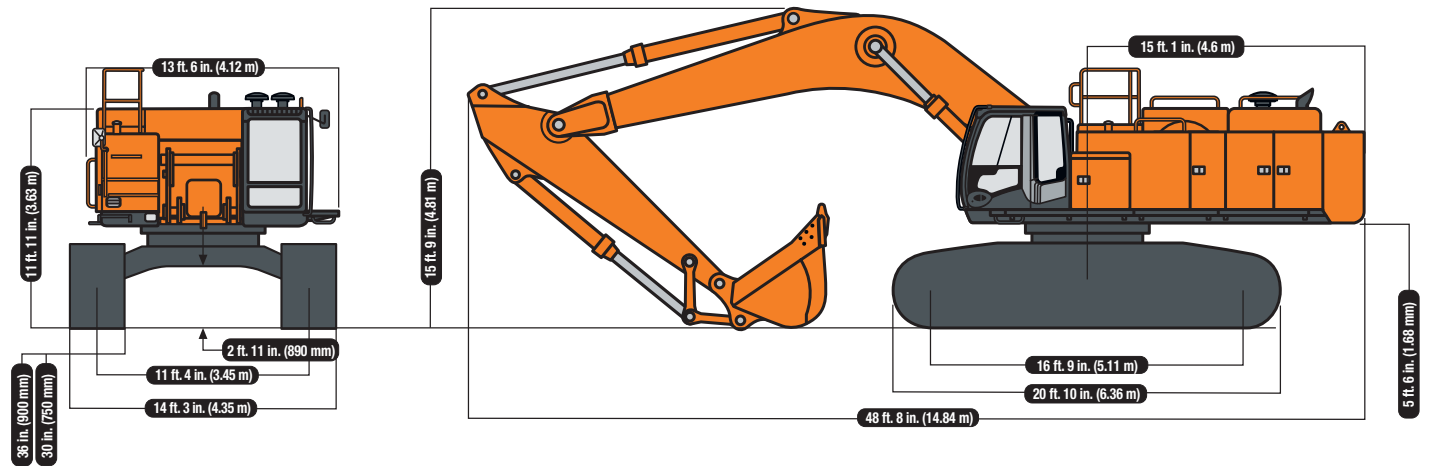
## Lift Capacities

With 14-ft. 5-in. (4.4 m) arm; 4.04-cu.-yd. (3.09 m<sup>3</sup>), 54-in. (1370 mm), 6,620-lb. (3003 kg) bucket; and 36-in. (900 mm) triple semi-grouser shoes with power boost. **Bold italic numbers indicate hydraulic-limited capacities.**

Load Point Height	15 ft. (4.57 m)		20 ft. (6.10 m)		25 ft. (7.62 m)	
	Over Front	Over Side	Over Front	Over Side	Over Front	Over Side
15 ft. (4.57 m)			<i>48,500 (21 999)</i>	<i>48,500 (21 999)</i>	<i>38,400 (17 418)</i>	<i>38,400 (17 418)</i>
10 ft. (3.05 m)			<i>60,900 (27 624)</i>	<i>60,900 (27 624)</i>	<i>45,100 (20 457)</i>	<i>45,100 (20 457)</i>
5 ft. (1.52 m)			<i>50,800 (23 043)</i>		42,600 (19 323)	
Ground Line			<i>47,500 (21 546)</i>	<i>47,500 (21 546)</i>	<i>54,500 (24 721)</i>	40,800 (18 507)
-5 ft. (-1.52 m)			<i>61,700 (27 987)</i>	56,600 (25 674)	<i>55,800 (25 311)</i>	39,800 (18 053)
-10 ft. (-3.05 m)	<i>45,000 (20 412)</i>	<i>45,000 (20 412)</i>	<i>69,900 (31 706)</i>	56,700 (25 719)	<i>55,100 (24 993)</i>	39,500 (17 917)
-15 ft. (-4.57 m)	<i>71,300 (32 341)</i>	<i>71,300 (32 341)</i>	<i>65,000 (29 483)</i>	57,200 (25 946)	<i>52,100 (23 632)</i>	39,600 (17 962)

## Dimensions

With 14-ft. 5-in. (4.4 m) arm and 36-in. (900 mm) triple semi-grouser shoes



## Operating Information

With 14-ft. 5-in. (4.4 m) arm and 36-in. (900 mm) triple semi-grouser shoes

A	Maximum Reach .....	48 ft. 11 in. (14.91 m)
A'	Maximum Reach @ Ground Level .....	48 ft. 0 in. (14.64 m)
B	Maximum Digging Depth .....	31 ft. 5 in. (9.57 m)
B'	Maximum Digging Depth @ 8-ft. (2.44 m) Flat Bottom .....	31 ft. 0 in. (9.46 m)
C	Maximum Cutting Height .....	45 ft. 4 in. (13.82 m)
D	Maximum Dumping Height .....	31 ft. 11 in. (9.74 m)
E	Minimum Swing Radius .....	19 ft. 6 in. (5.95 m)
F	Maximum Vertical Wall .....	27 ft. 10 in. (8.48 m)
G	Tail Swing Radius .....	15 ft. 1 in. (4.6 m)

## Additional Equipment

- 12-ft. 1-in. (3.7 m) arm
- 17-ft. 9-in. (5.4 m) arm
- 23-ft. 4-in. (7.1 m) mass-excavating boom with 9-ft. 8-in. (2.95 m) arm
- 30-in. (750 mm) triple semi-grouser shoes

Specifications and design subject to change without notice. Wherever applicable, specifications are in accordance with SAE standards. Except where otherwise noted, these specifications are based on a unit with 54-in. (1372 mm) bucket, 36-in. (900 mm) triple semi-grouser shoes, 29,321-lb. (13 300 kg) counterweight, full fuel tank, and 175-lb. (79 kg) operator.

Illustrations and photos show the standard models, and may or may not include optional equipment, accessories, and all standard equipment with some differences in color and features. Before use, read and understand the Operator's Manual for proper operation.